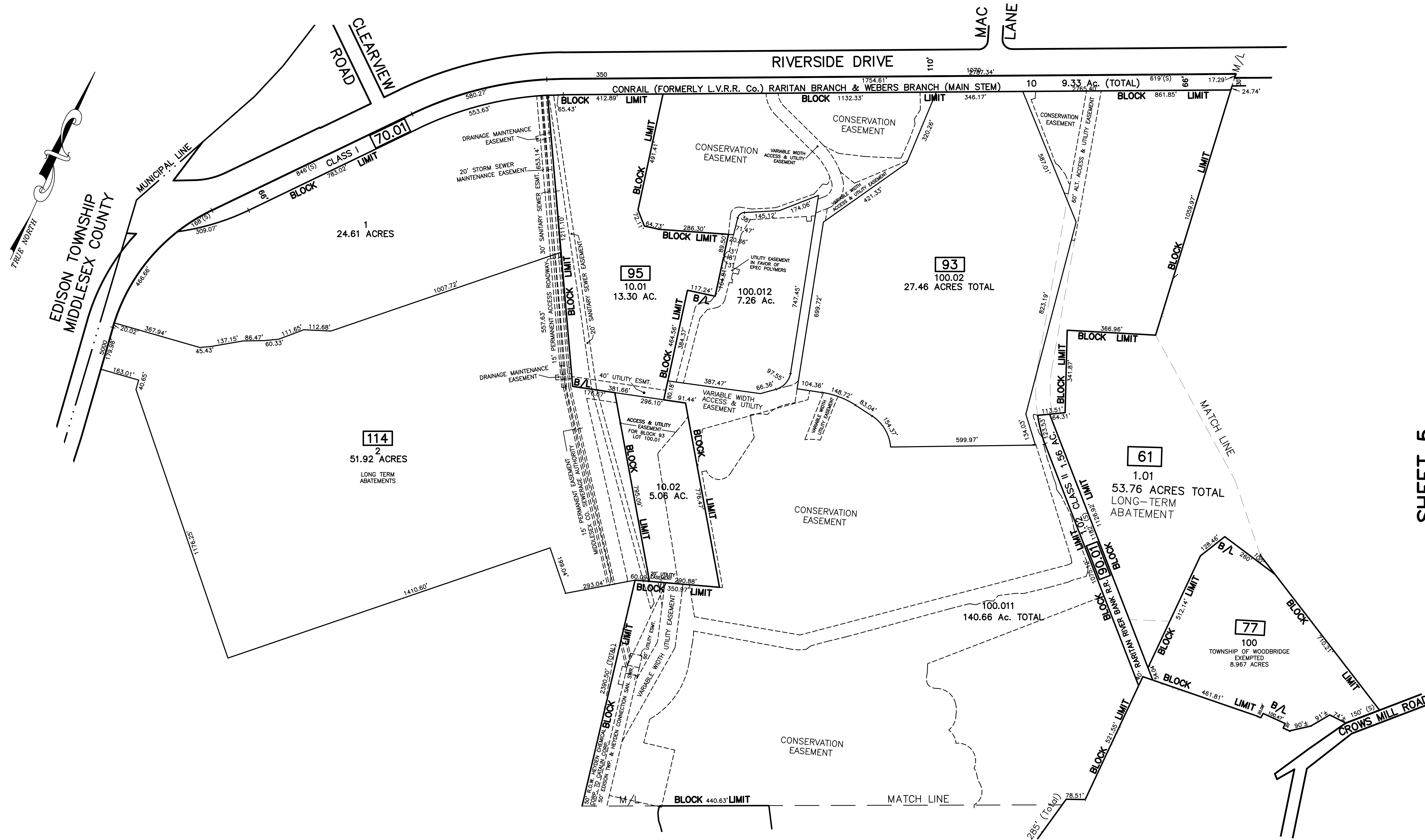


12/31/16	Tox Map Revisions	SB	REV. BY	CHK.
12/31/15	Tox Map Revisions	SB		
12/31/14	Tox Map Revisions	SB		
12/31/13	Tox Map Revisions	SB		
12/31/12	Tox Map Revisions	SB		
11/02/11	Bl. 93 L 100 & Bl. 95 Lot 10.02-Easements	SB		
	REVISION DESCRIPTION			

# SHEET 7



SHEET 1

SHEET 2

SHEET 5

NOTE  
 PORTIONS OF THIS TAX MAP MAY HAVE BEEN PREPARED FROM  
 SCANNED OR DIGITIZED FILED MAPS AND/OR TAX MAPS.  
 ALL PORTIONS OF THIS TAX MAP HAVE BEEN PREPARED  
 ELECTRONICALLY IN AUTOCAD MAP 2000.

TAX MAP  
 WOODBRIDGE TOWNSHIP  
 MIDDLESEX COUNTY, NEW JERSEY  
 SCALE : 1"= 200' DATE : JUNE 2008  
 MICHAEL J. McGURL, P.L.S.  
 CME ASSOCIATES  
 3141 BORDENTOWN AVENUE, PARLIN  
 NEW JERSEY, 08859