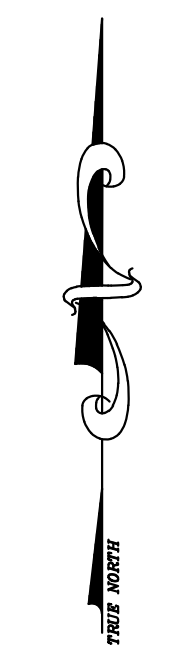
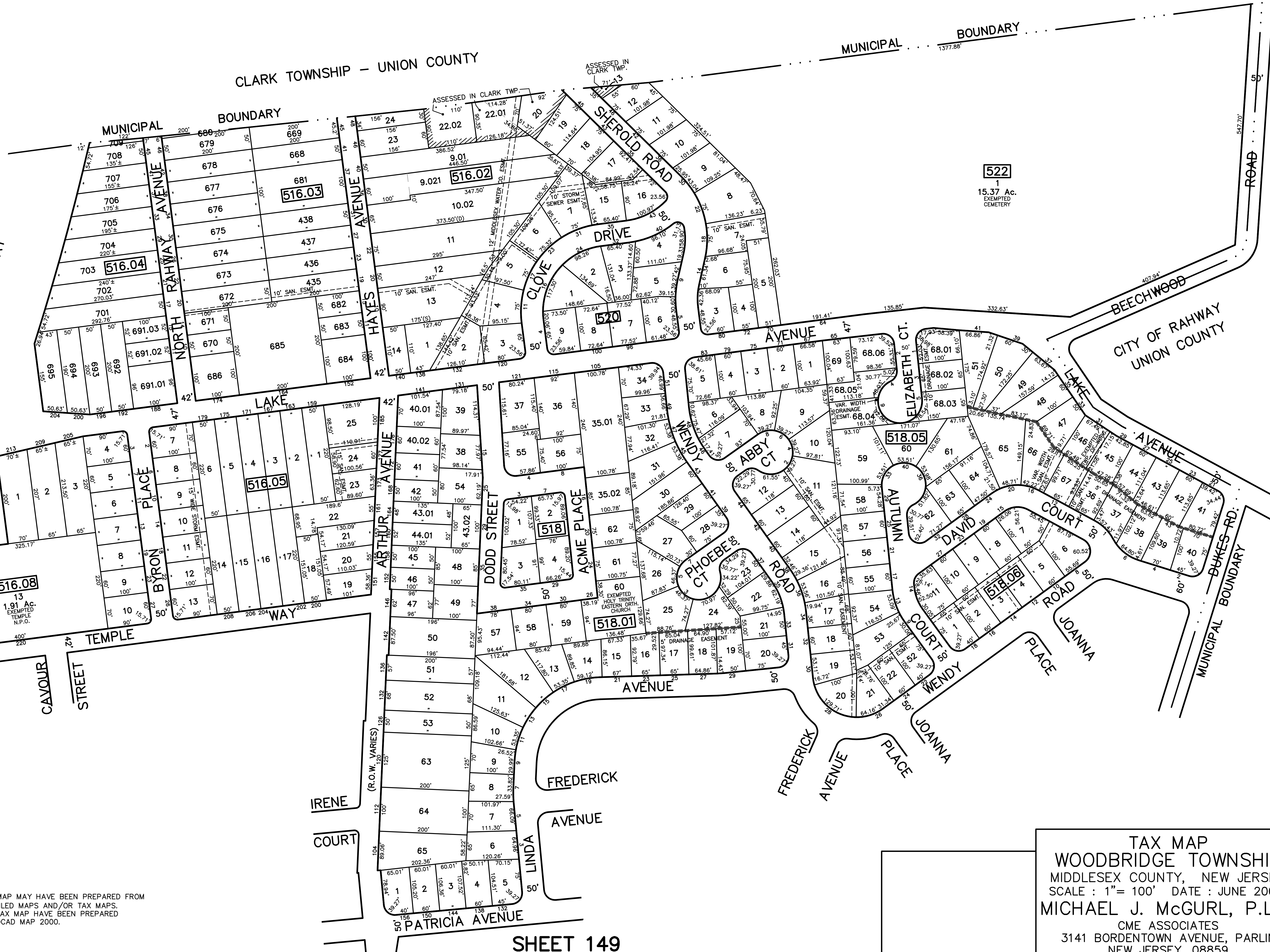


12/31/14 Tax Map Revisions
REVISED DESCRIPTION
SR
REV. BY CHK.



SHEET 148

NEW JERSEY HIGHWAY ROUTE 4 PARKWAY



NOTE
PORTIONS OF THIS TAX MAP MAY HAVE BEEN PREPARED FROM
SCANNED OR DIGITIZED FILED MAPS AND/OR TAX MAPS.
ALL PORTIONS OF THIS TAX MAP HAVE BEEN PREPARED
ELECTRONICALLY IN AUTOCAD MAP 2000.

SHEET 149

TAX MAP
WOODBIDGE TOWNSHIP
MIDDLESEX COUNTY, NEW JERSEY
SCALE : 1" = 100' DATE : JUNE 2008
MICHAEL J. McGURL, P.L.S.
CME ASSOCIATES
3141 BORDENTOWN AVENUE, PARLIN
NEW JERSEY, 08859