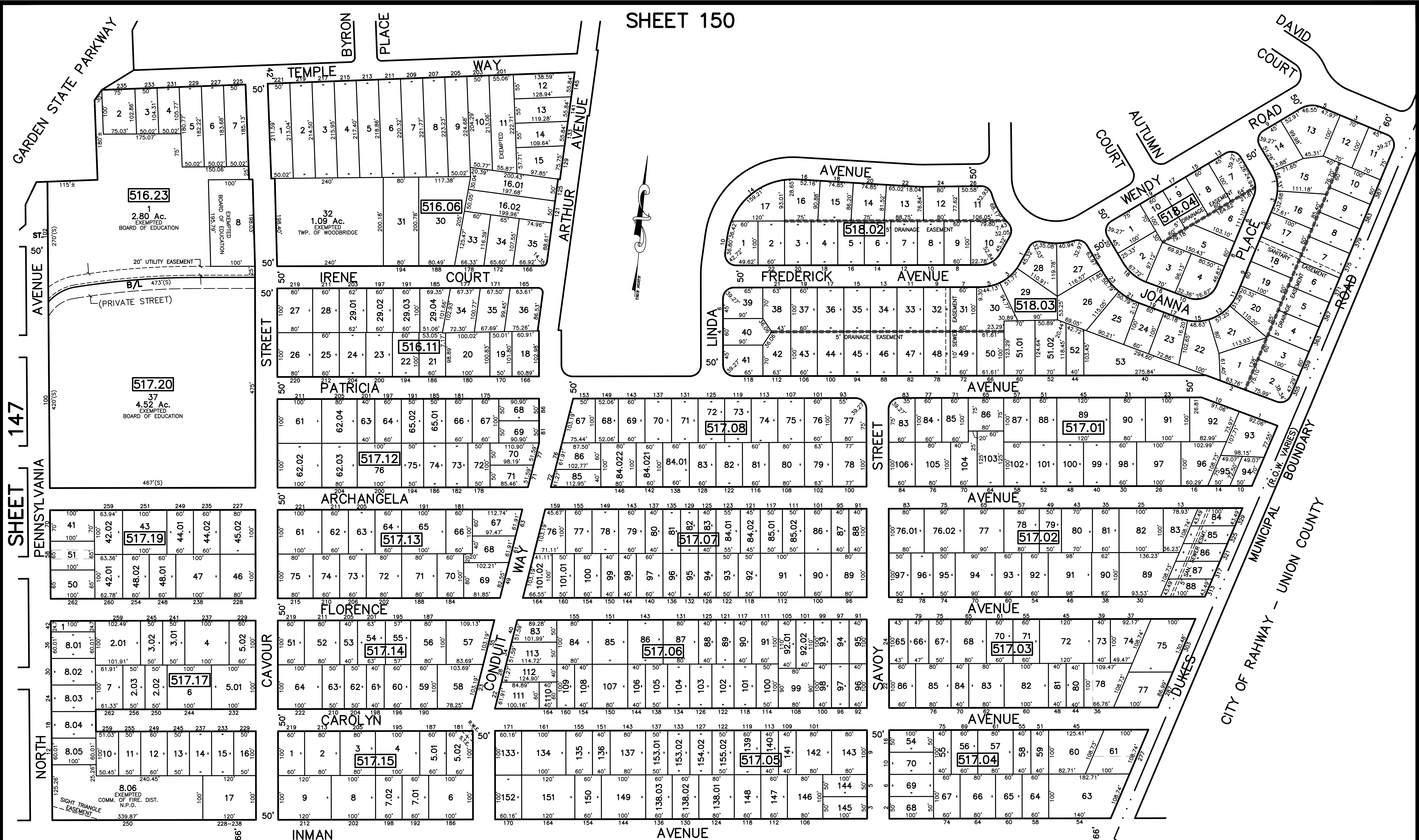


SHEET 150

12/31/17	Top Map Revisions	SB
12/31/12	Top Map Revisions	SB
12/20/10	R.O.M. & S.I. Easements-Bk. 517.15 Lot 5.02	SB
11/04/10	Utility Easement-Bk. 516.23, pt. 1	USE
11/04/10	Redignment of Conour Street	USE
11/04/10	Corrections-Bks. 516.06, 516.23, 517.20	USE
10/24/10	Subdivision - Bk. 517.15, lot 5.01 and 5.02	USE
REVISED	DESCRIPTION	REV. BY
		CHK.



NOTE
 PORTIONS OF THIS TAX MAP MAY HAVE BEEN PREPARED FROM
 SCANNED OR DIGITIZED FILED MAPS AND/OR TAX MAPS.
 ALL PORTIONS OF THIS TAX MAP HAVE BEEN PREPARED
 ELECTRONICALLY IN AUTOCAD MAP 2000.

TAX MAP
 WOODBRIDGE TOWNSHIP
 MIDDLESEX COUNTY, NEW JERSEY
 SCALE : 1" = 100' DATE : JUNE 2008
 MICHAEL J. McGURL, P.L.S.
 CME ASSOCIATES
 3141 BORDENTOWN AVENUE, PARLIN
 NEW JERSEY, 08859