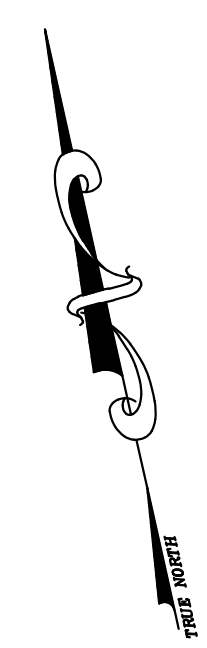


12/31/12	Tax Map Revisions	DESCRIPTION
SR	REV. BY	CHK.



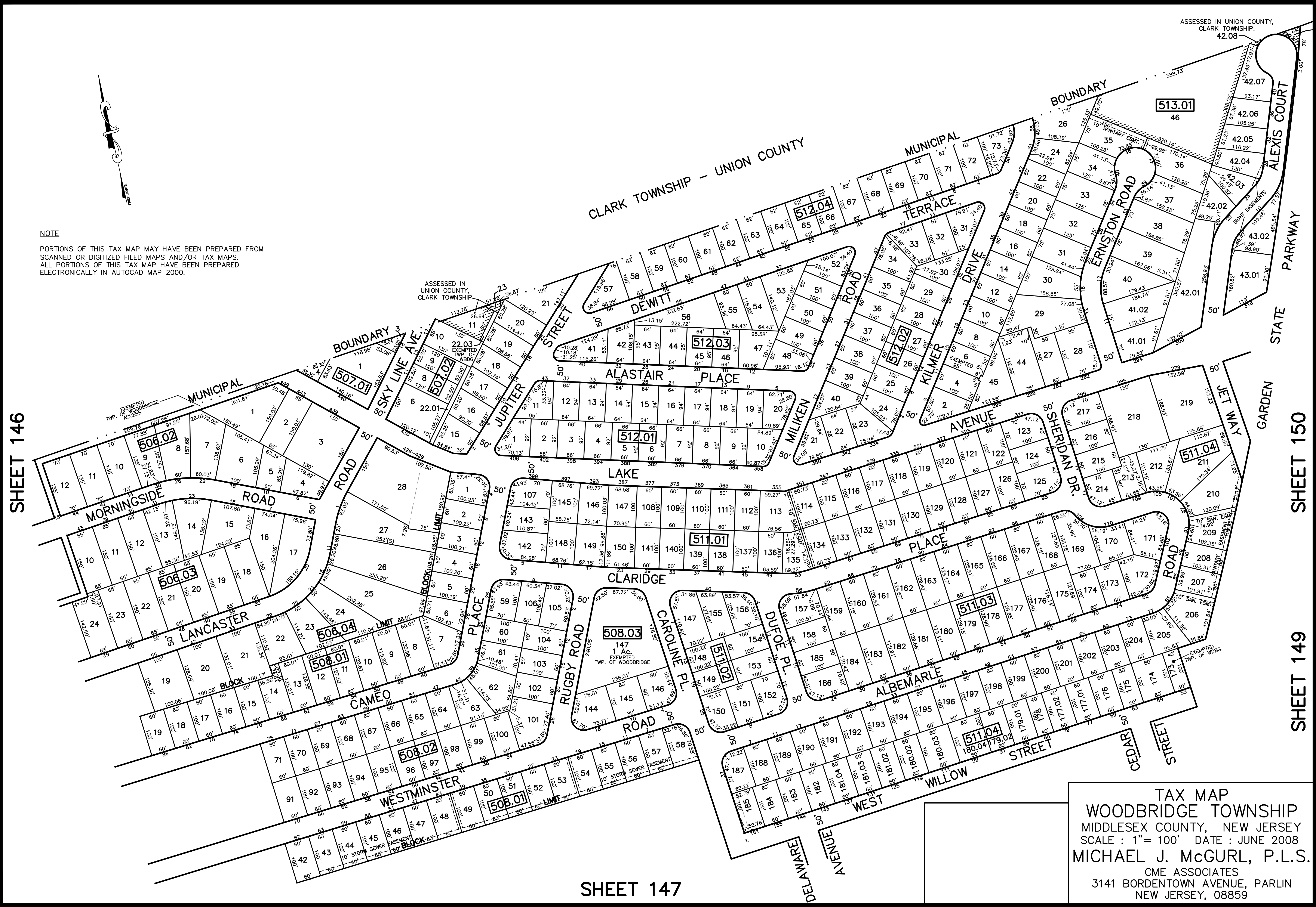
NOTE
 PORTIONS OF THIS TAX MAP MAY HAVE BEEN PREPARED FROM
 SCANNED OR DIGITIZED FILED MAPS AND/OR TAX MAPS.
 ALL PORTIONS OF THIS TAX MAP HAVE BEEN PREPARED
 ELECTRONICALLY IN AUTOCAD MAP 2000.

SHEET 146

SHEET 150

SHEET 149

SHEET 147



TAX MAP
 WOODBRIDGE TOWNSHIP
 MIDDLESEX COUNTY, NEW JERSEY
 SCALE : 1" = 100' DATE : JUNE 2008
 MICHAEL J. McGURL, P.L.S.
 CME ASSOCIATES
 3141 BORDENTOWN AVENUE, PARLIN
 NEW JERSEY, 08859

ASSESSED IN UNION COUNTY,
 CLARK TOWNSHIP:
 42.08

ASSESSED IN
 UNION COUNTY,
 CLARK TOWNSHIP

EXEMPTED
 TWP. OF WOODBRIDGE