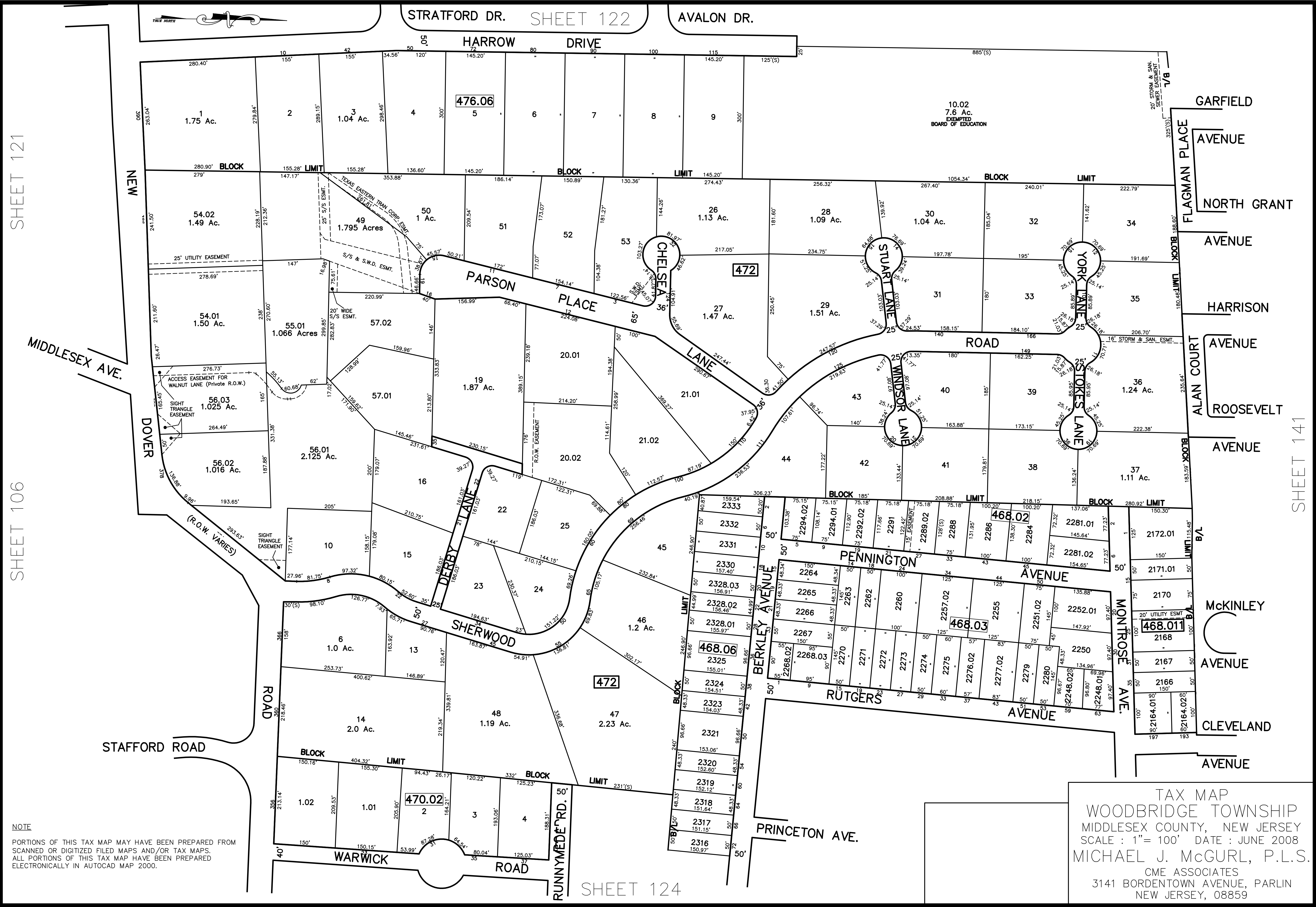


12/31/18	Tax Map Revisions	SR	
12/31/16	Tax Map Revisions	SR	
12/31/15	Tax Map Revisions	SR	
	REVISION DESCRIPTION		REV. BY
			CHK.



SHEET 121

SHEET 106

SHEET 141

SHEET 124

**NOTE**  
 PORTIONS OF THIS TAX MAP MAY HAVE BEEN PREPARED FROM  
 SCANNED OR DIGITIZED FILED MAPS AND/OR TAX MAPS.  
 ALL PORTIONS OF THIS TAX MAP HAVE BEEN PREPARED  
 ELECTRONICALLY IN AUTOCAD MAP 2000.

TAX MAP  
 WOODBRIDGE TOWNSHIP  
 MIDDLESEX COUNTY, NEW JERSEY  
 SCALE : 1" = 100' DATE : JUNE 2008  
 MICHAEL J. MCGURL, P.L.S.  
 CME ASSOCIATES  
 3141 BORDENTOWN AVENUE, PARLIN  
 NEW JERSEY, 08859