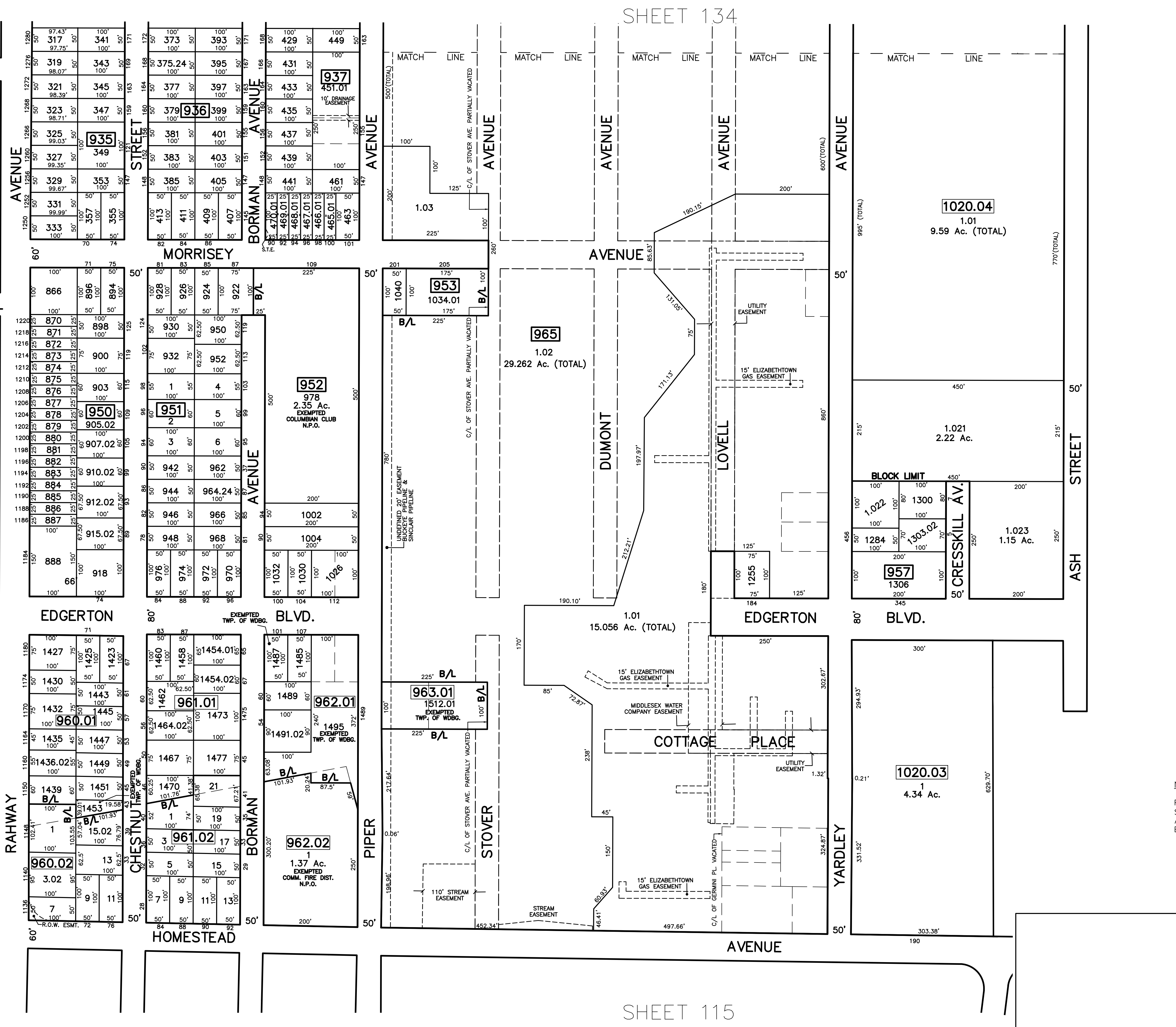


12/31/18	Tax Map Revisions	SB
12/31/16	Tax Map Revisions	SB
12/31/13	Tax Map Revisions	SB
12/31/12	Tax Map Revisions	SB
09/03/10	Subdivision-BK 837 lots 451, 457 and 459	ISE
REVISED	DESCRIPTION	REV. BY
		CHK.

SHEET 113 SHEET 114 SHEET 115

RAHWAY ST. KOHL ST. PARIS LA.



**NOTE**  
 PORTIONS OF THIS TAX MAP MAY HAVE BEEN PREPARED FROM  
 SCANNED OR DIGITIZED FILED MAPS AND/OR TAX MAPS.  
 ALL PORTIONS OF THIS TAX MAP HAVE BEEN PREPARED  
 ELECTRONICALLY IN AUTOCAD MAP 2000.

**TAX MAP**  
 WOODBRIDGE TOWNSHIP  
 MIDDLESEX COUNTY, NEW JERSEY  
 SCALE : 1" = 100' DATE : JUNE 2008  
 MICHAEL J. McGURL, P.L.S.  
 CME ASSOCIATES  
 3141 BORDENTOWN AVENUE, PARLIN  
 NEW JERSEY, 08859