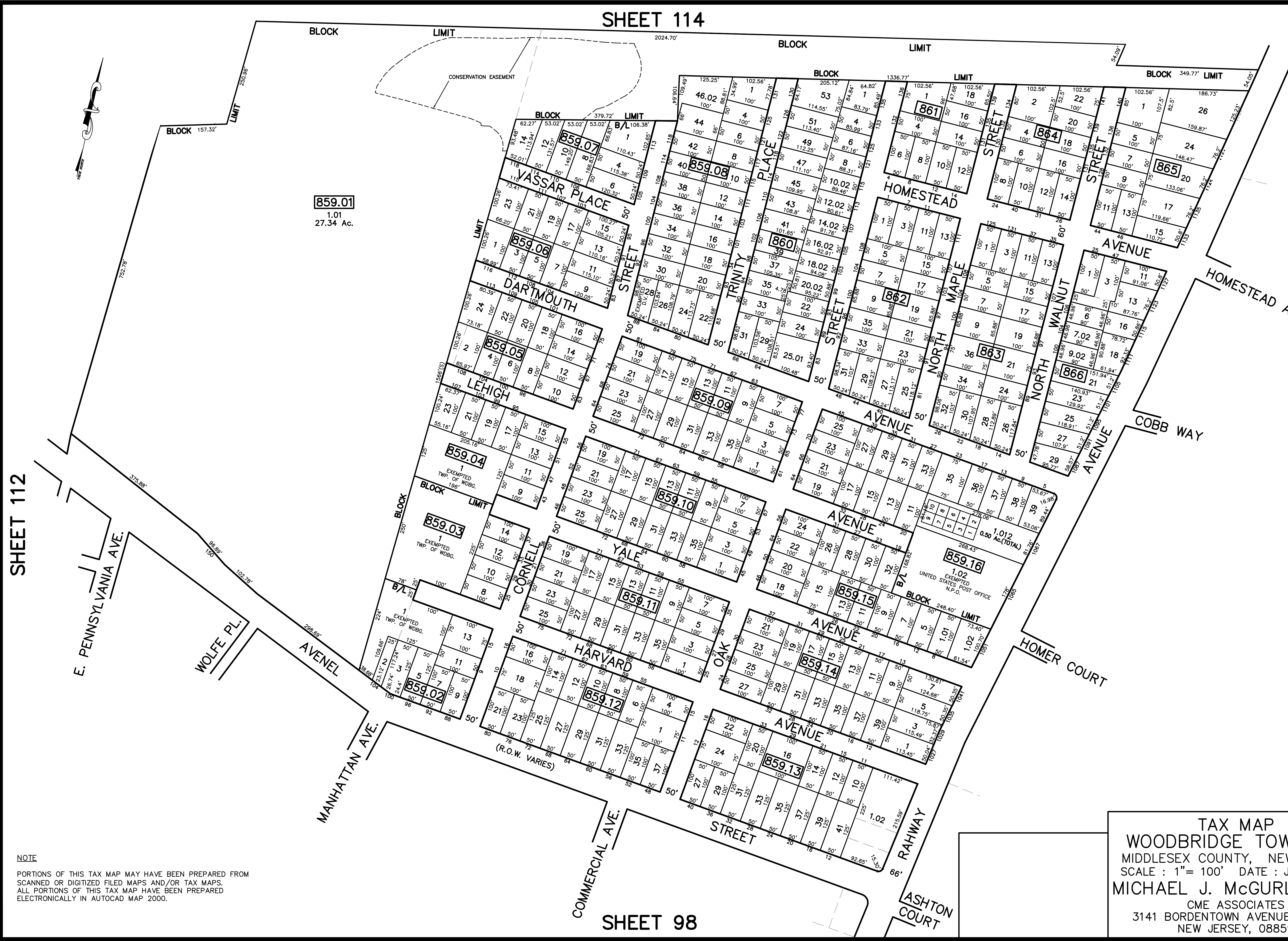


SHEET 114

REVISED	DESCRIPTION	REV. BY	CHK.
12/31/17	Tax Map Revisions	SR	
12/31/14	Tax Map Revisions	SR	
12/31/13	Tax Map Revisions	SR	



**859.01**  
1.01  
27.34 Ac.

SHEET 112

SHEET 116

SHEET 115

TAX MAP  
WOODBRIDGE TOWNSHIP  
MIDDLESEX COUNTY, NEW JERSEY  
SCALE : 1"= 100' DATE : JUNE 2008  
MICHAEL J. McGURL, P.L.S.  
CME ASSOCIATES  
3141 BORDENTOWN AVENUE, PARLIN  
NEW JERSEY, 08859

NOTE  
PORTIONS OF THIS TAX MAP MAY HAVE BEEN PREPARED FROM  
SCANNED OR DIGITIZED FILED MAPS AND/OR TAX MAPS.  
ALL PORTIONS OF THIS TAX MAP HAVE BEEN PREPARED  
ELECTRONICALLY IN AUTOCAD MAP 2000.

SHEET 98