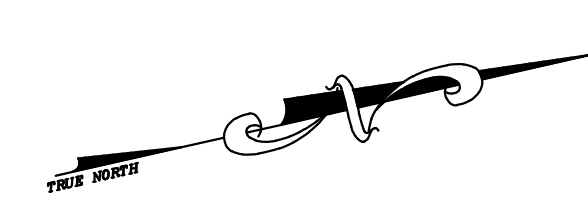


SHEET 110

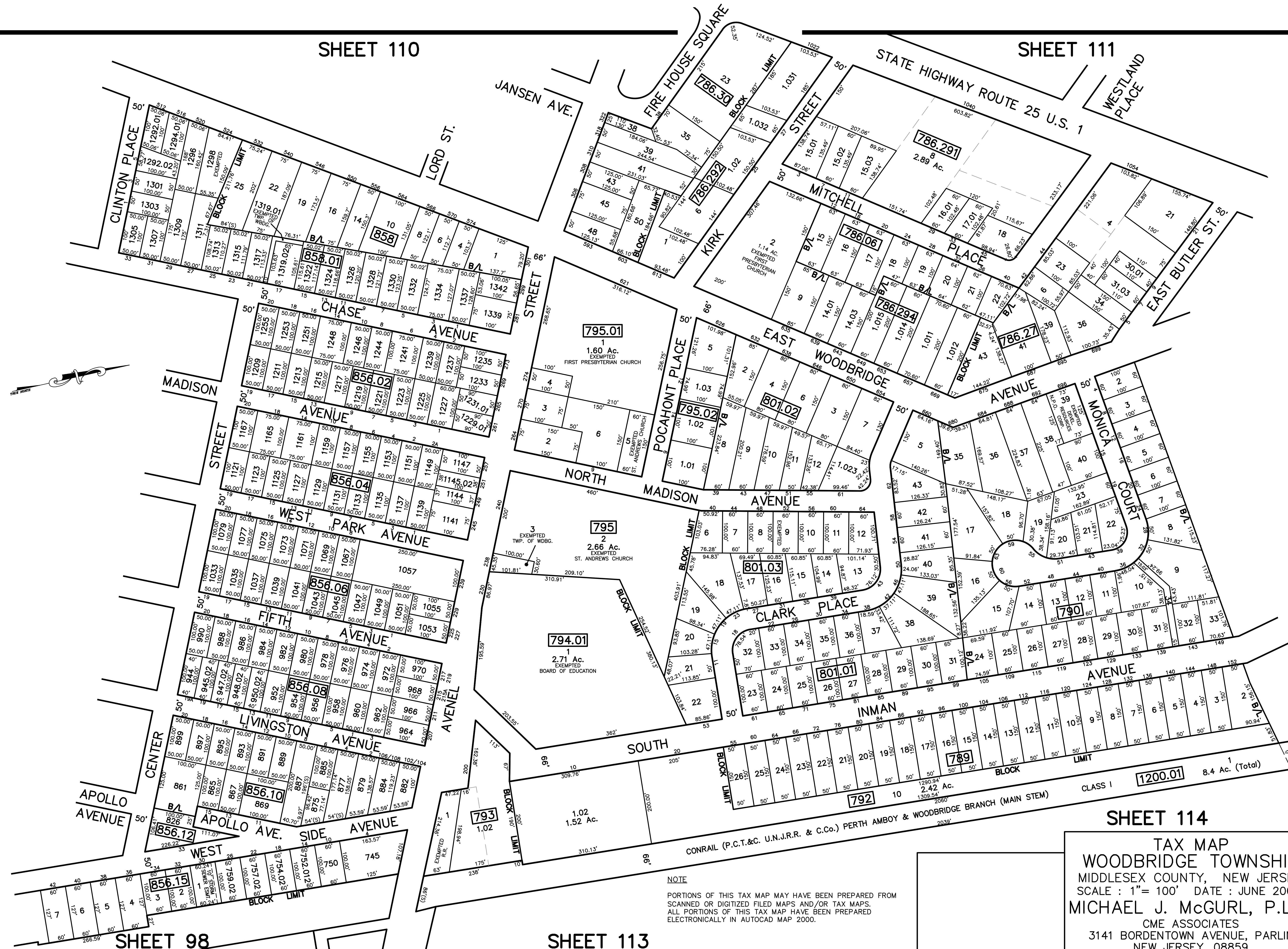
SHEET 111

12/31/13 Tax Map Revisions
REVISED DESCRIPTION
SR REV. BY CHK.



SHEET 97

SHEET 129



SHEET 98

SHEET 113

SHEET 114

TAX MAP
WOODBRIDGE TOWNSHIP
MIDDLESEX COUNTY, NEW JERSEY
SCALE : 1"= 100' DATE : JUNE 2008
MICHAEL J. McGURL, P.L.S.
CME ASSOCIATES
3141 BORDENTOWN AVENUE, PARLIN
NEW JERSEY, 08859

NOTE
PORTIONS OF THIS TAX MAP MAY HAVE BEEN PREPARED FROM
SCANNED OR DIGITIZED FILED MAPS AND/OR TAX MAPS.
ALL PORTIONS OF THIS TAX MAP HAVE BEEN PREPARED
ELECTRONICALLY IN AUTOCAD MAP 2000.