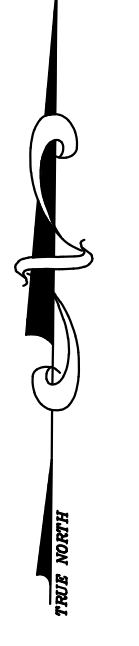
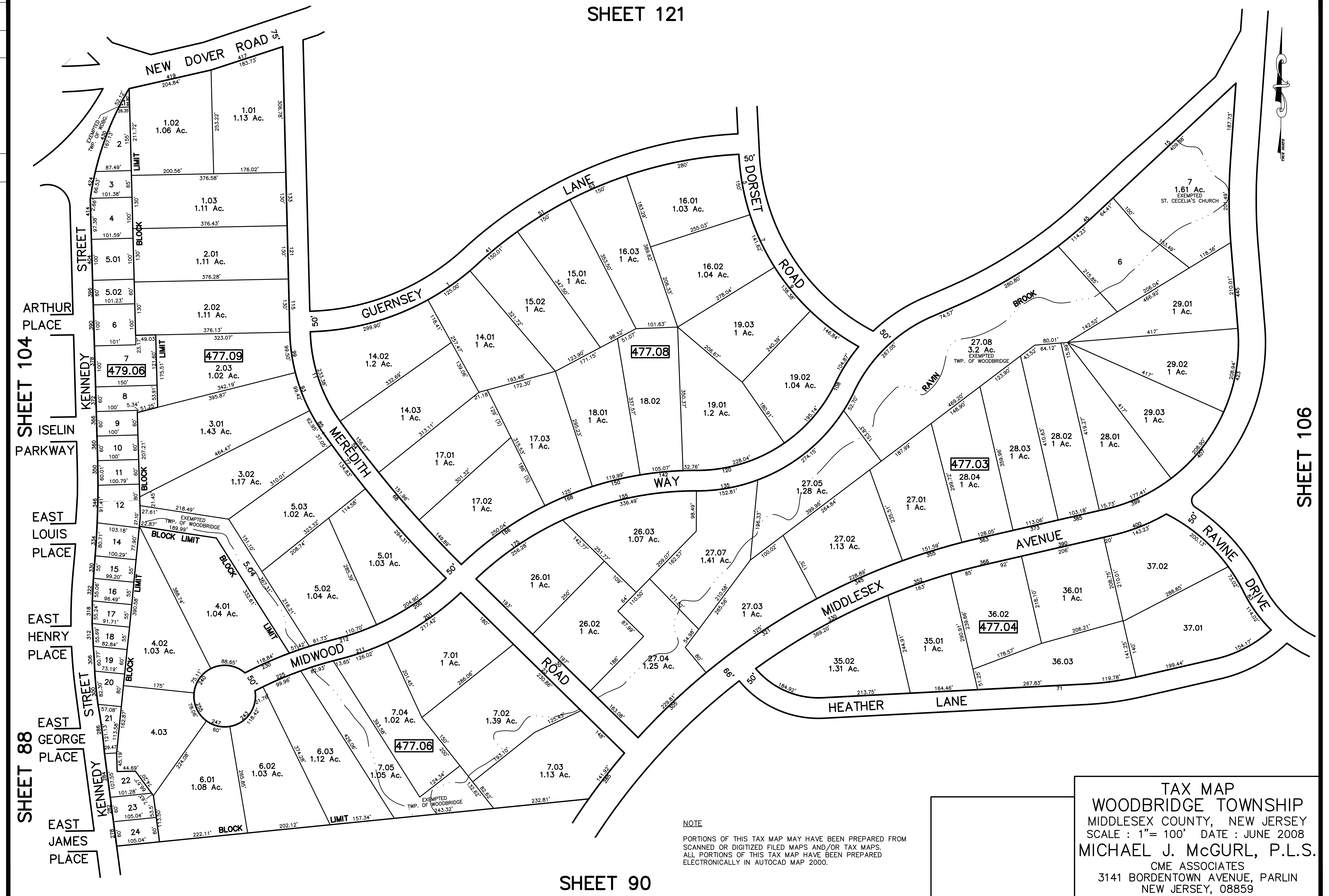


SHEET 121

12/31/12	Tax Map Revisions	SR	REV. BY	CHK.
	REVISED			
	DESCRIPTION			



SHEET 104
ARTHUR PLACE
ISELIN PARKWAY
EAST LOUIS PLACE
EAST HENRY PLACE
EAST GEORGE PLACE
EAST JAMES PLACE

SHEET 106

SHEET 90

NOTE
PORTIONS OF THIS TAX MAP MAY HAVE BEEN PREPARED FROM
SCANNED OR DIGITIZED FILED MAPS AND/OR TAX MAPS.
ALL PORTIONS OF THIS TAX MAP HAVE BEEN PREPARED
ELECTRONICALLY IN AUTOCAD MAP 2000.

TAX MAP
WOODBIDGE TOWNSHIP
MIDDLESEX COUNTY, NEW JERSEY
SCALE : 1" = 100' DATE : JUNE 2008
MICHAEL J. MCGURL, P.L.S.
CME ASSOCIATES
3141 BORDENTOWN AVENUE, PARLIN
NEW JERSEY, 08859