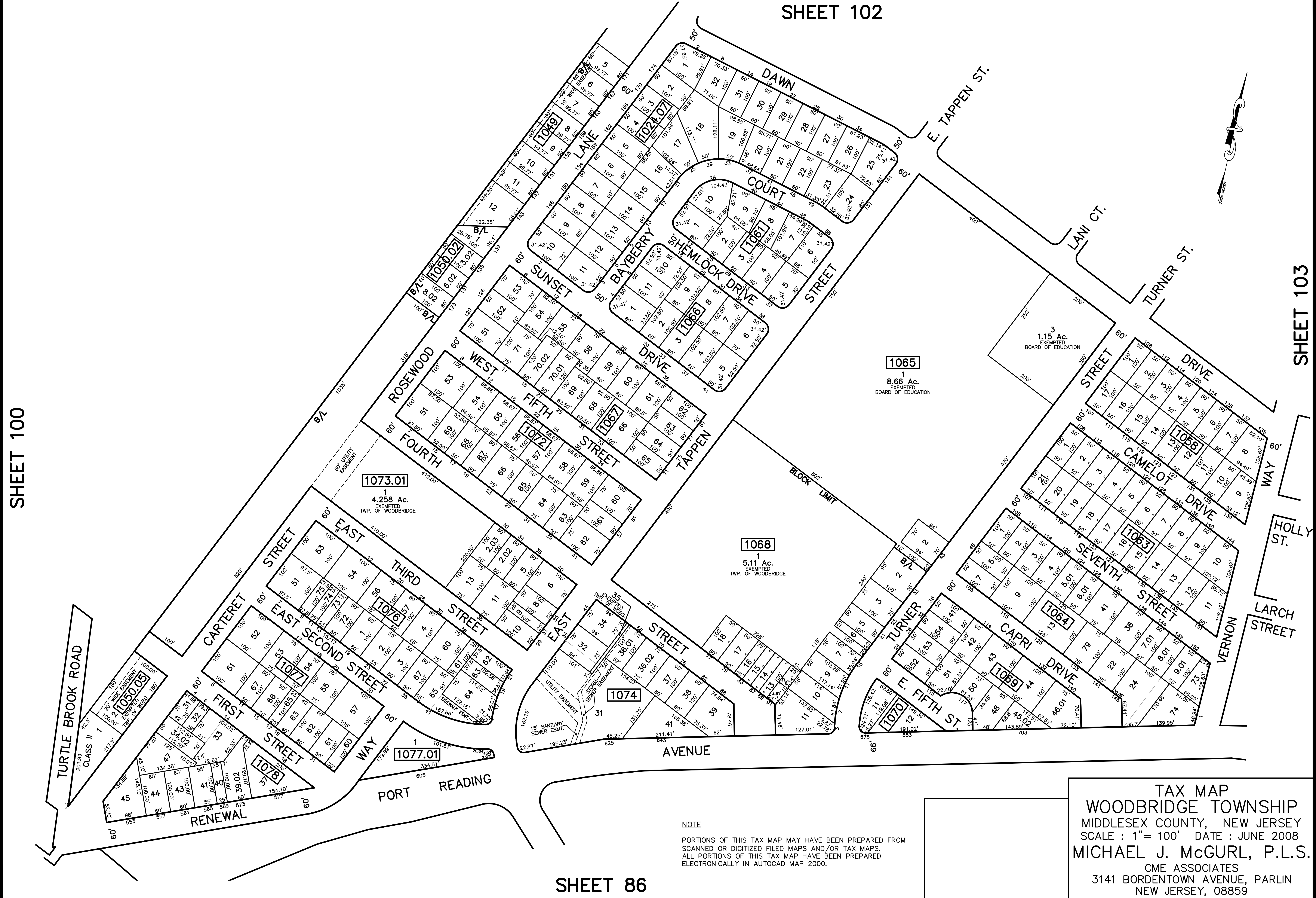


12/31/16	Top Map Revisions	SR
12/31/15	Top Map Revisions	SR
12/31/12	Top Map Revisions	SR
11/02/11	BL 1073.01 L 284-Combine to create L 2.01	SR
REVISED	DESCRIPTION	
	REV. BY	CHK.

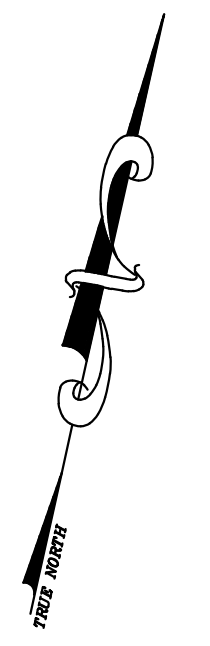


SHEET 100

SHEET 102

SHEET 103

SHEET 86



NOTE
 PORTIONS OF THIS TAX MAP MAY HAVE BEEN PREPARED FROM
 SCANNED OR DIGITIZED FILED MAPS AND/OR TAX MAPS.
 ALL PORTIONS OF THIS TAX MAP HAVE BEEN PREPARED
 ELECTRONICALLY IN AUTOCAD MAP 2000.

TAX MAP
WOODBIDGE TOWNSHIP
 MIDDLESEX COUNTY, NEW JERSEY
 SCALE : 1"= 100' DATE : JUNE 2008
MICHAEL J. McGURL, P.L.S.
 CME ASSOCIATES
 3141 BORDENTOWN AVENUE, PARLIN
 NEW JERSEY, 08859