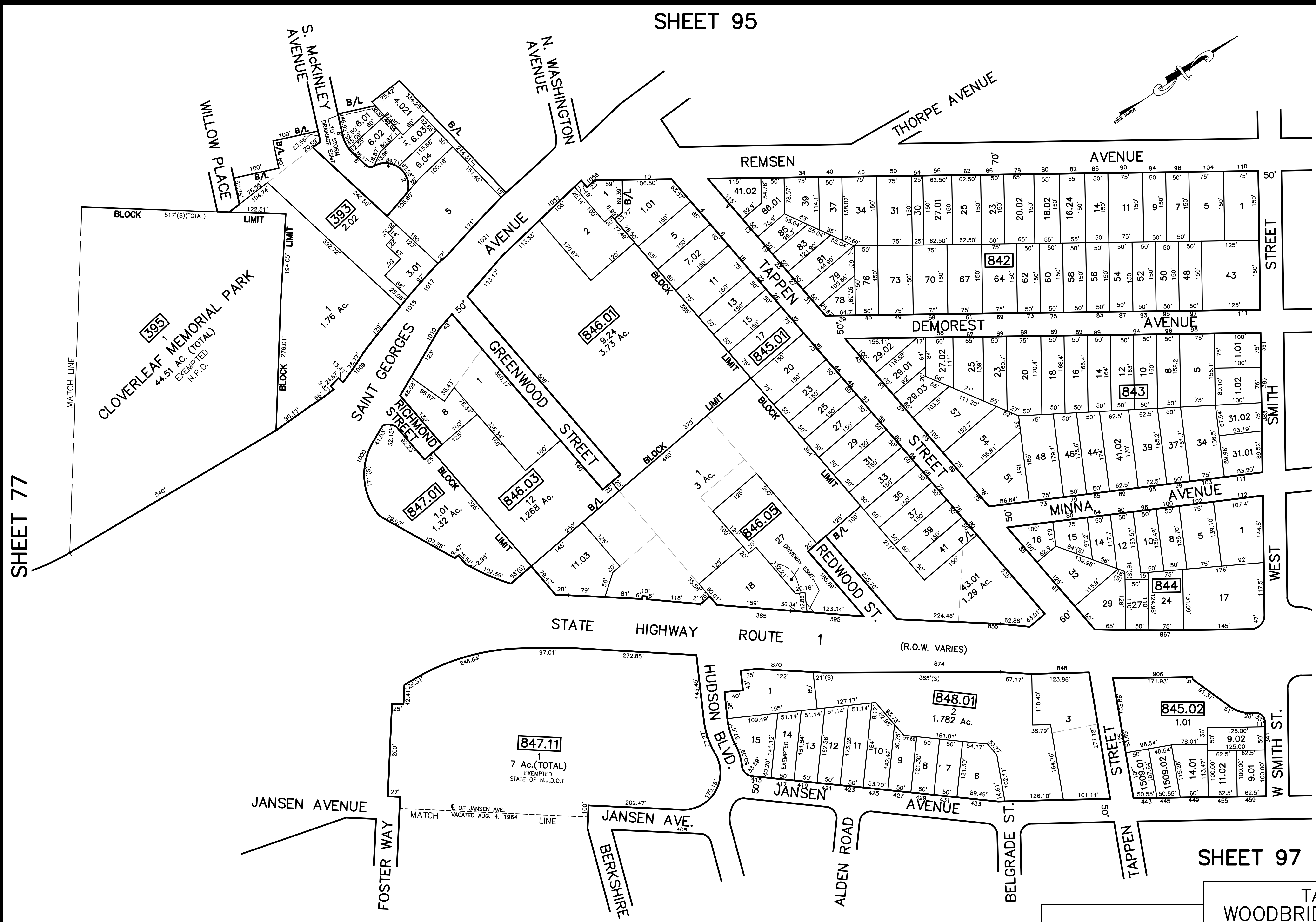
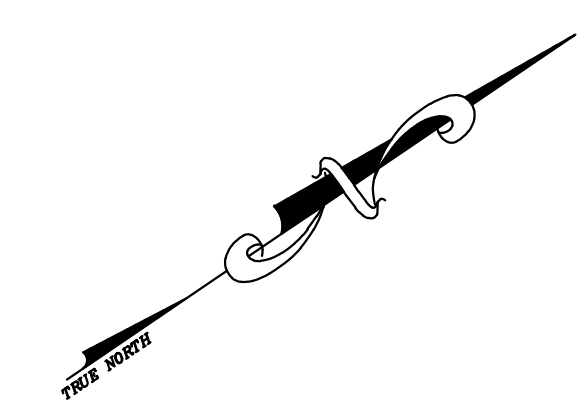


SHEET 95

12/23/16	Tox Map Revisions	SR
12/23/15	Tox Map Revisions	SR
12/23/13	Tox Map Revisions	SR
12/23/12	Tox Map Revisions	SR
10/24/10	ADDITION TO BK. 847.01, Lct. 1	JSE
REVISED	DESCRIPTION	REV. BY
		CHK.



SHEET 77

SHEET 110

NOTE  
 PORTIONS OF THIS TAX MAP MAY HAVE BEEN PREPARED FROM  
 SCANNED OR DIGITIZED FILED MAPS AND/OR TAX MAPS.  
 ALL PORTIONS OF THIS TAX MAP HAVE BEEN PREPARED  
 ELECTRONICALLY IN AUTOCAD MAP 2000.

SHEET 78

SHEET 97

TAX MAP  
 WOODBRIDGE TOWNSHIP  
 MIDDLESEX COUNTY, NEW JERSEY  
 SCALE : 1" = 100' DATE : JUNE 2008  
 MICHAEL J. McGURL, P.L.S.  
 CME ASSOCIATES  
 3141 BORDENTOWN AVENUE, PARLIN  
 NEW JERSEY, 08859