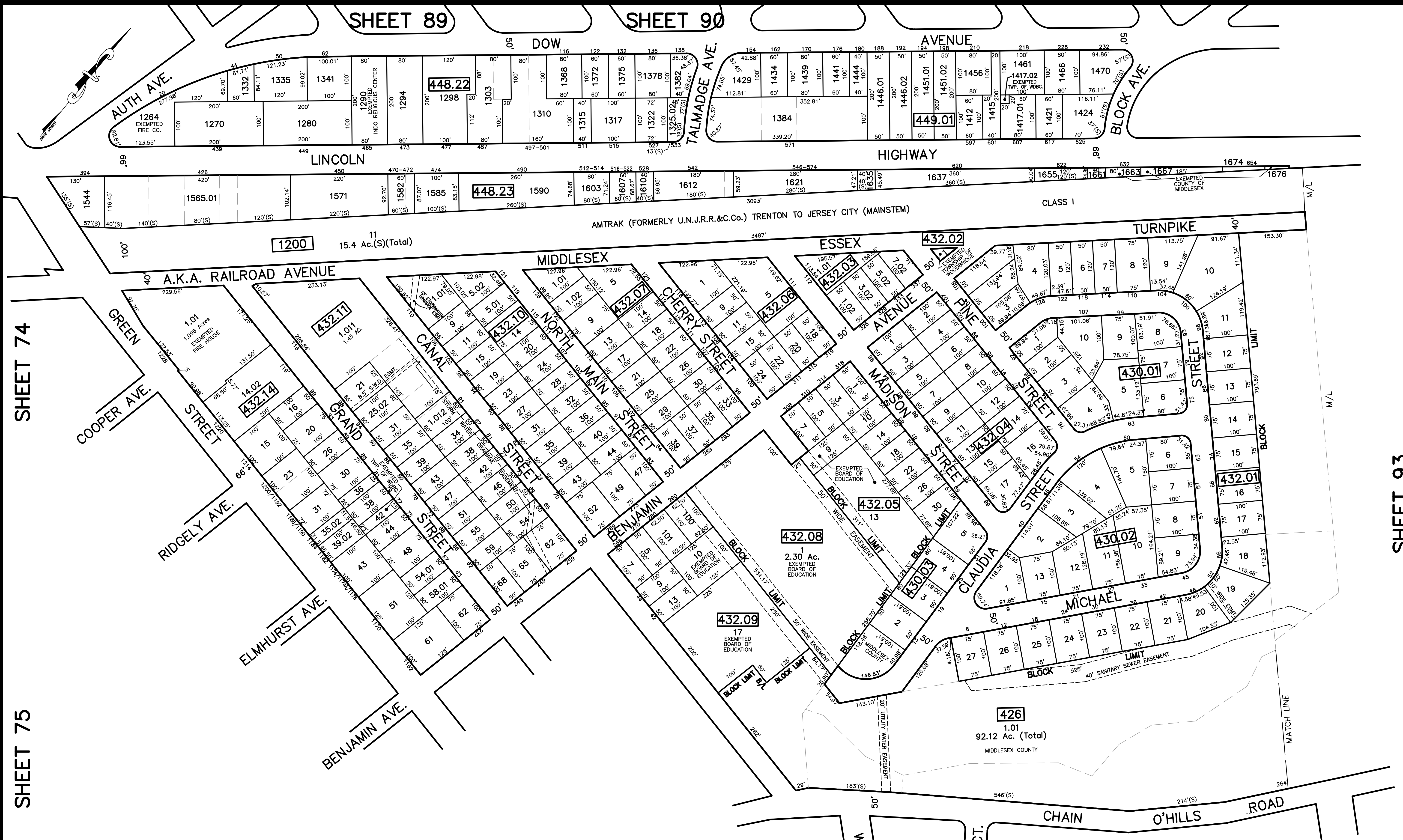


12/31/16	Toy Map Revisions	SB
12/31/14	Toy Map Revisions	SB
12/31/12	Toy Map Revisions	SB
11/02/11	Subdivision-Blk 432.11, 1st Change to Plat 1.01	SB
09/08/10	Subdivision-Blk 432.14, 1st Plat	SB
09/08/10	R.O.W. Takap-Blk 432.14, 1st Plat	SB
REVISED	DESCRIPTION	
		REV. BY CHK.



SHEET 74

SHEET 75

SHEET 89

SHEET 90

SHEET 92

SHEET 93

NOTE  
 PORTIONS OF THIS TAX MAP MAY HAVE BEEN PREPARED FROM  
 SCANNED OR DIGITIZED FILED MAPS AND/OR TAX MAPS.  
 ALL PORTIONS OF THIS TAX MAP HAVE BEEN PREPARED  
 ELECTRONICALLY IN AUTOCAD MAP 2000.

TAX MAP  
 WOODBRIDGE TOWNSHIP  
 MIDDLESEX COUNTY, NEW JERSEY  
 SCALE : 1"= 100' DATE : JUNE 2008  
 MICHAEL J. McGURL, P.L.S.  
 CME ASSOCIATES  
 3141 BORDENTOWN AVENUE, PARLIN  
 NEW JERSEY, 08859