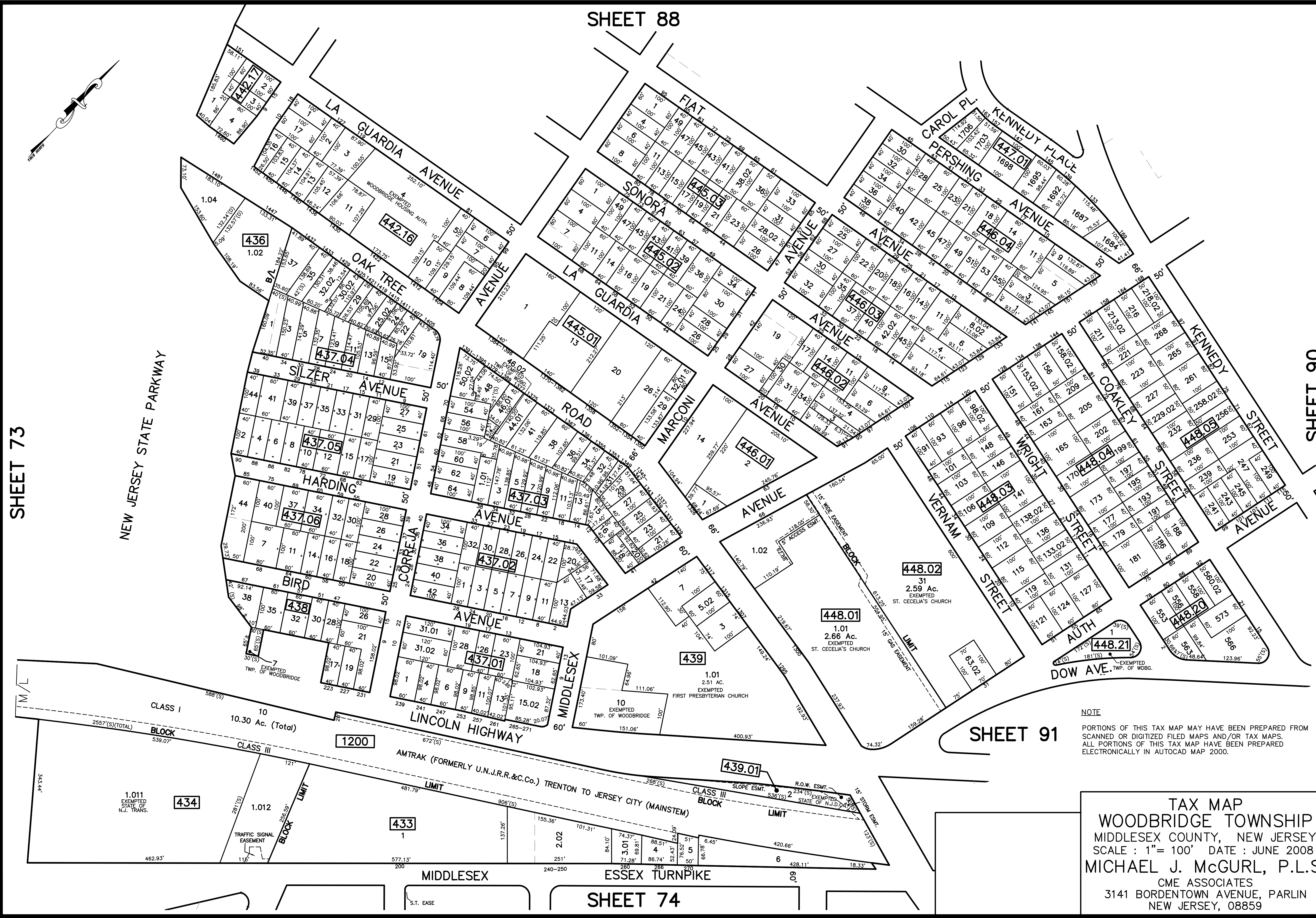
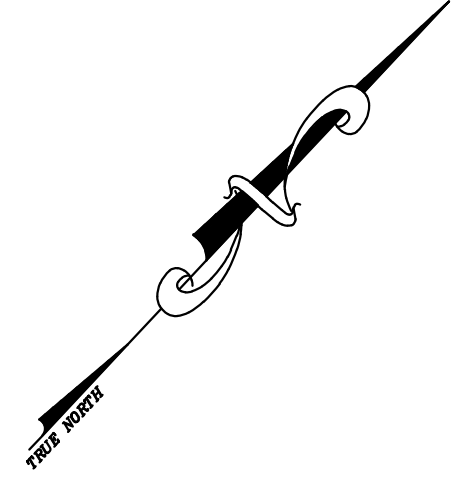


SHEET 88

| | | | |
|----------|---------------------|----|---------------|
| 12/31/16 | Tax Map Revisions | SB | |
| 12/31/14 | Tax Map Revisions | SB | |
| 12/31/12 | Tax Map Revisions | SB | |
| | REVISED DESCRIPTION | | REV. BY: CHK. |



NOTE
 PORTIONS OF THIS TAX MAP MAY HAVE BEEN PREPARED FROM
 SCANNED OR DIGITIZED FILED MAPS AND/OR TAX MAPS.
 ALL PORTIONS OF THIS TAX MAP HAVE BEEN PREPARED
 ELECTRONICALLY IN AUTOCAD MAP 2000.

TAX MAP
WOODBIDGE TOWNSHIP
 MIDDLESEX COUNTY, NEW JERSEY
 SCALE : 1" = 100' DATE : JUNE 2008
MICHAEL J. McGURL, P.L.S.
 CME ASSOCIATES
 3141 BORDENTOWN AVENUE, PARLIN
 NEW JERSEY, 08859

SHEET 73

SHEET 90

SHEET 91

SHEET 74