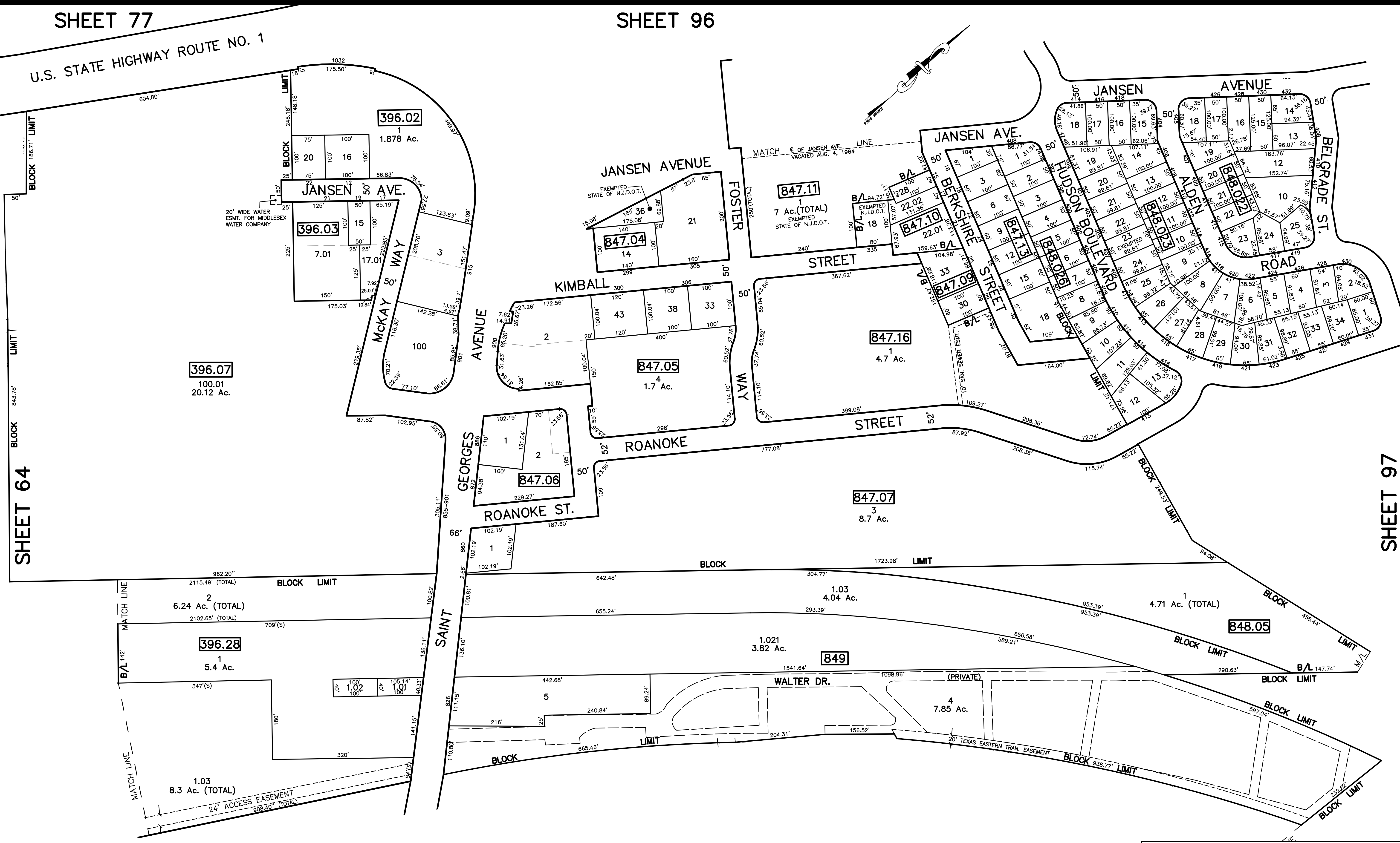


12/21/14	Top Map Revisions	SR
12/21/13	Top Map Revisions	SR
12/21/12	Top Map Revisions	SR
REVISED	DESCRIPTION	REV. BY
		CHK.

SHEET 77

SHEET 96

U.S. STATE HIGHWAY ROUTE NO. 1



NOTE
 PORTIONS OF THIS TAX MAP MAY HAVE BEEN PREPARED FROM
 SCANNED OR DIGITIZED FILED MAPS AND/OR TAX MAPS.
 ALL PORTIONS OF THIS TAX MAP HAVE BEEN PREPARED
 ELECTRONICALLY IN AUTOCAD MAP 2000.

TAX MAP
 WOODBRIDGE TOWNSHIP
 MIDDLESEX COUNTY, NEW JERSEY
 SCALE : 1" = 100' DATE : JUNE 2008
 MICHAEL J. McGURL, P.L.S.
 CME ASSOCIATES
 3141 BORDENTOWN AVENUE, PARLIN
 NEW JERSEY, 08859

SHEET 66

SHEET 79