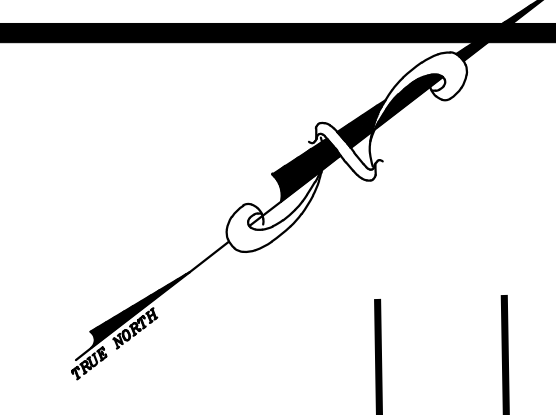
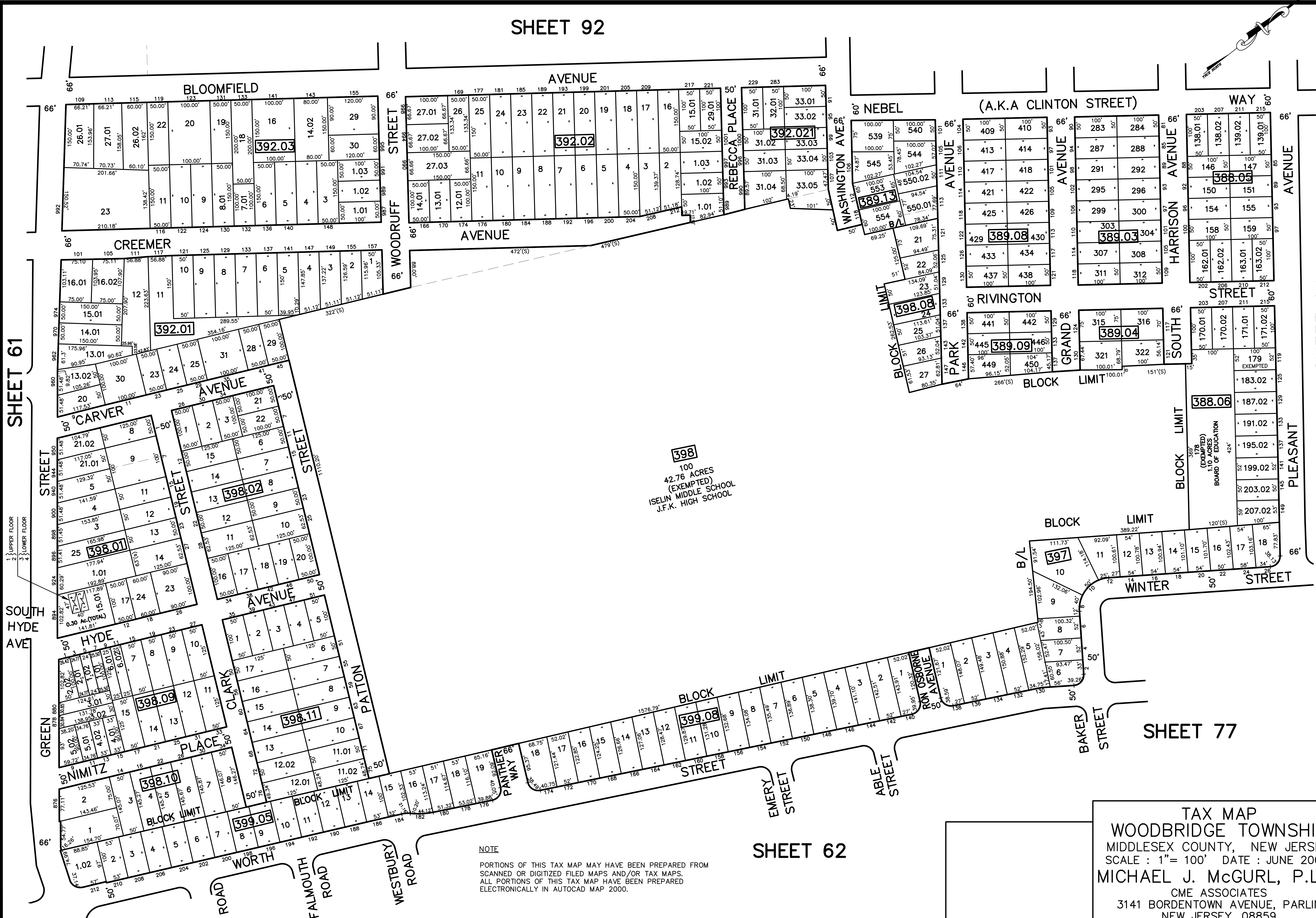


SHEET 92



12/23/17	Tox Map Revisions
12/23/17	Tox Map Revisions
11/2/11	B398.01 L15.01-Change Condo Numbers
11/2/11	B398.01-Combine L9 & L10 into L9
11/2/11	B392.01-Combine L13 & L19 into L13
11/2/11	Remove Woodruff St. (off North S1) to Panther Way
11/29/10	Subdivision-Bk. 392.01, lot 11
09/16/10	Subdivision-Bk. 392.02, lots 26 thru 27.03
REVISED	DESCRIPTION
REV. BY	CHK.



398
 100
 42.76 ACRES
 (EXEMPTED)
 ISELIN MIDDLE SCHOOL
 J.F.K. HIGH SCHOOL

NOTE
 PORTIONS OF THIS TAX MAP MAY HAVE BEEN PREPARED FROM
 SCANNED OR DIGITIZED FILED MAPS AND/OR TAX MAPS.
 ALL PORTIONS OF THIS TAX MAP HAVE BEEN PREPARED
 ELECTRONICALLY IN AUTOCAD MAP 2000.

TAX MAP
 WOODBRIDGE TOWNSHIP
 MIDDLESEX COUNTY, NEW JERSEY
 SCALE : 1"= 100' DATE : JUNE 2008
 MICHAEL J. McGURL, P.L.S.
 CME ASSOCIATES
 3141 BORDENTOWN AVENUE, PARLIN
 NEW JERSEY, 08859

SHEET 61

SHEET 62

SHEET 77

SHEET 94