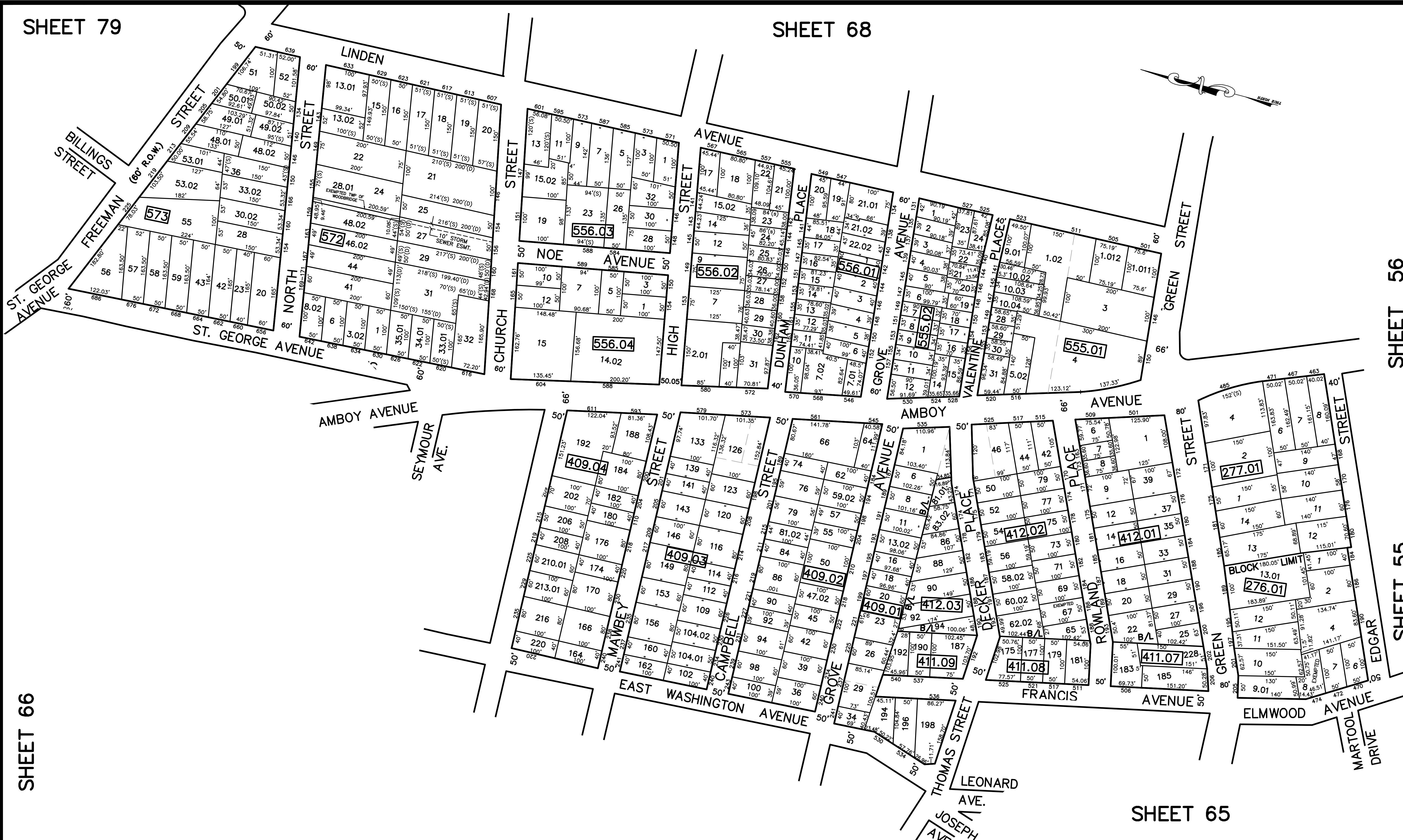


12/31/16	Top Map Revisions	SB
12/31/15	Top Map Revisions	SB
12/31/12	Top Map Revisions	SB
11/29/10	Corrections-Bk 556.01, lts 19, 21,01,21,02	JSE
09/29/10	Subdivision-Bk 409.04, lts 210 and 213	JSE
09/28/10	Subdivision-Bk 277.01, lts 9 and 10	JSE
REVISED	DESCRIPTION	
	REV. BY	CHK.

SHEET 79

SHEET 68



SHEET 56

SHEET 55

SHEET 66

SHEET 65

SHEET 66

NOTE
 PORTIONS OF THIS TAX MAP MAY HAVE BEEN PREPARED FROM
 SCANNED OR DIGITIZED FILED MAPS AND/OR TAX MAPS.
 ALL PORTIONS OF THIS TAX MAP HAVE BEEN PREPARED
 ELECTRONICALLY IN AUTOCAD MAP 2000.

TAX MAP
 WOODBRIDGE TOWNSHIP
 MIDDLESEX COUNTY, NEW JERSEY
 SCALE : 1"= 100' DATE : JUNE 2008
 MICHAEL J. McGURL, P.L.S.
 CME ASSOCIATES
 3141 BORDENTOWN AVENUE, PARLIN
 NEW JERSEY, 08859