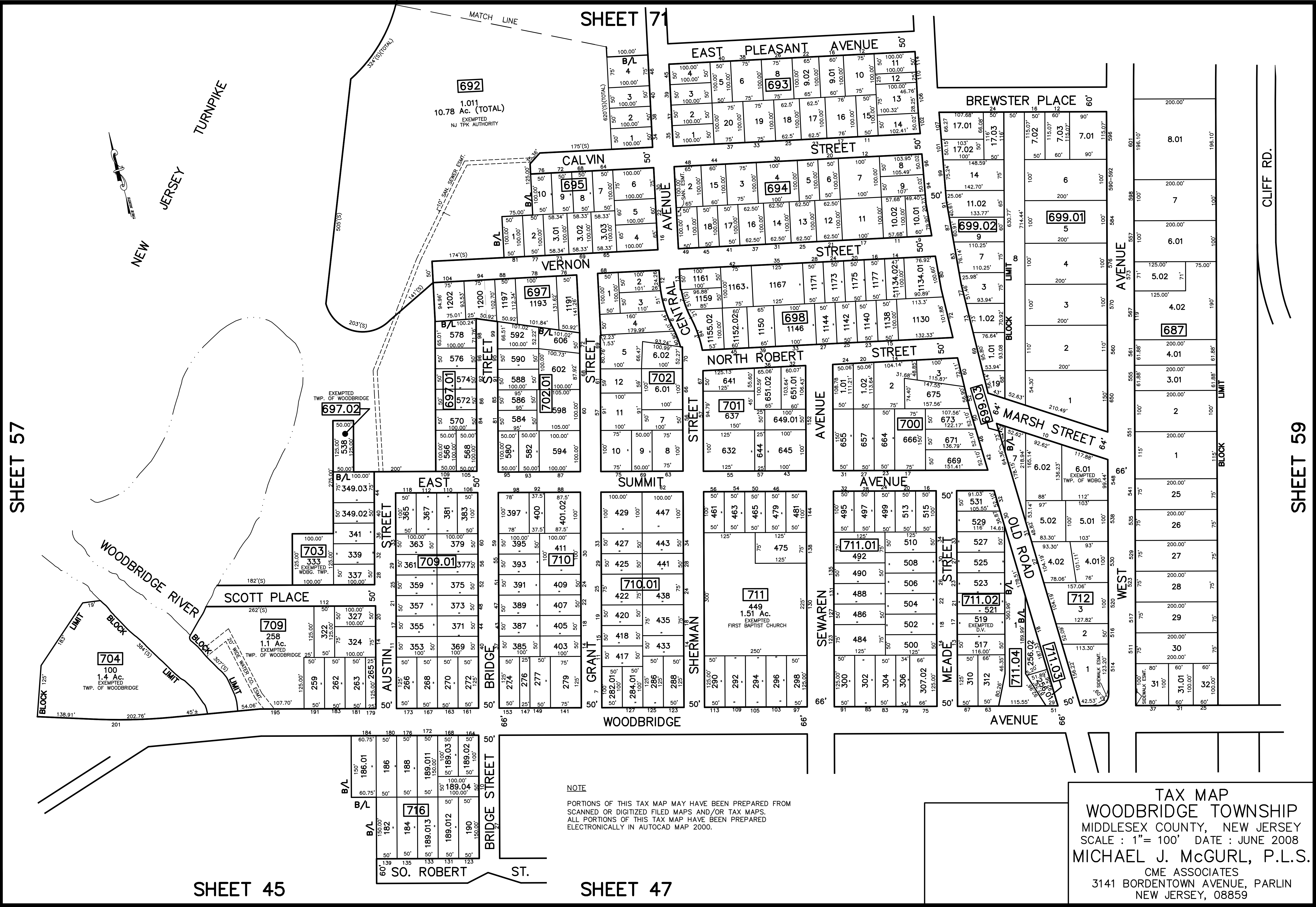


REVISED	DESCRIPTION
12/31/12	Top Map Revisions
11/02/11	Essements-Bk. 712 L 1 & Bk. 687 L 31
09/27/10	Subdivision-Bk. 702, lots 11 and 12
09/27/10	Subdivision-Bk. 702.01, lot 584, 586, 598
	REV. BY: CHK.



SHEET 57

SHEET 71

SHEET 59

SHEET 45

SHEET 47

NOTE
 PORTIONS OF THIS TAX MAP MAY HAVE BEEN PREPARED FROM
 SCANNED OR DIGITIZED FILED MAPS AND/OR TAX MAPS.
 ALL PORTIONS OF THIS TAX MAP HAVE BEEN PREPARED
 ELECTRONICALLY IN AUTOCAD MAP 2000.

TAX MAP
 WOODBRIDGE TOWNSHIP
 MIDDLESEX COUNTY, NEW JERSEY
 SCALE : 1" = 100' DATE : JUNE 2008
 MICHAEL J. McGURL, P.L.S.
 CME ASSOCIATES
 3141 BORDENTOWN AVENUE, PARLIN
 NEW JERSEY, 08859