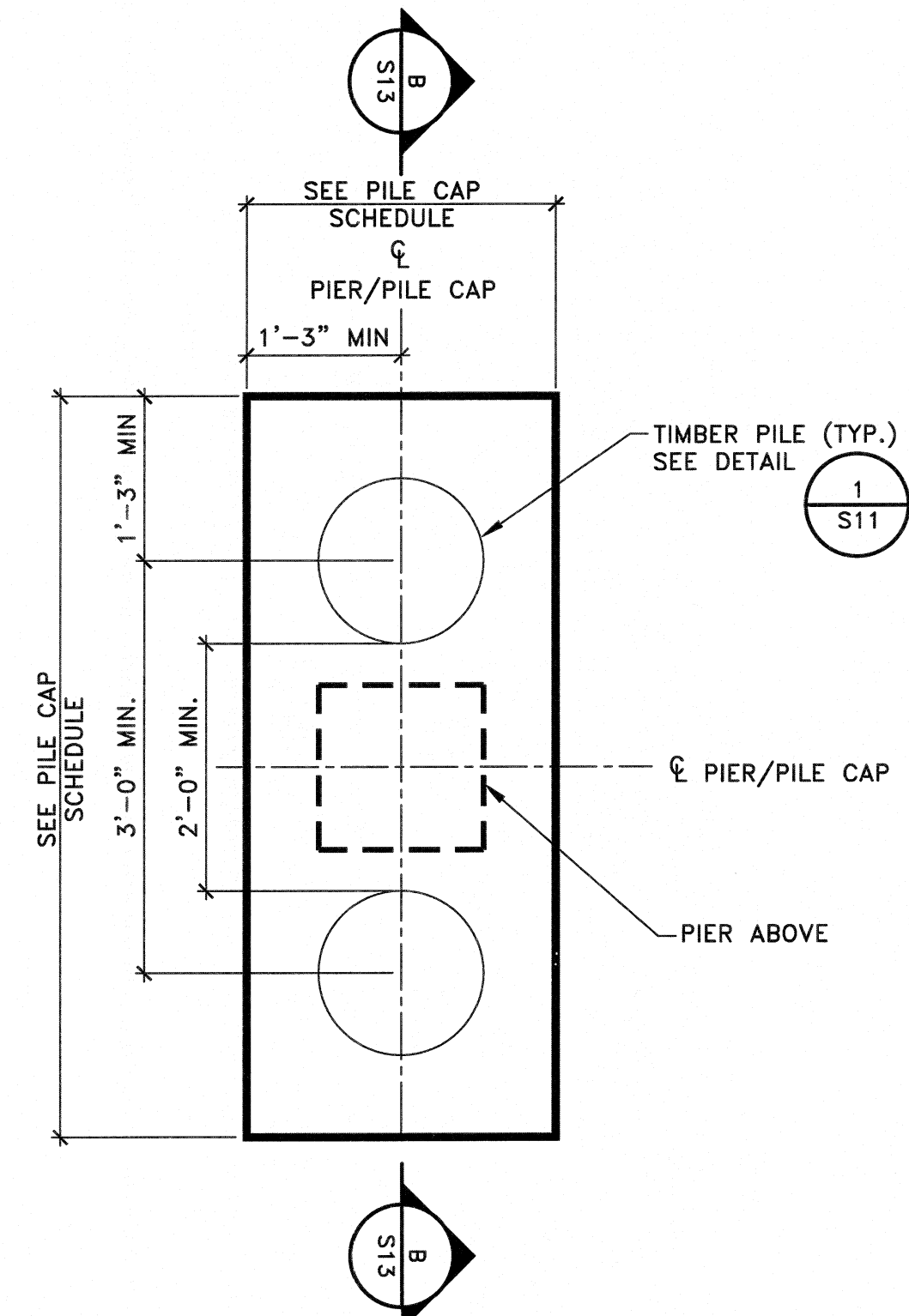


TYPICAL PILE CAP/FOOTING (F1) PLAN

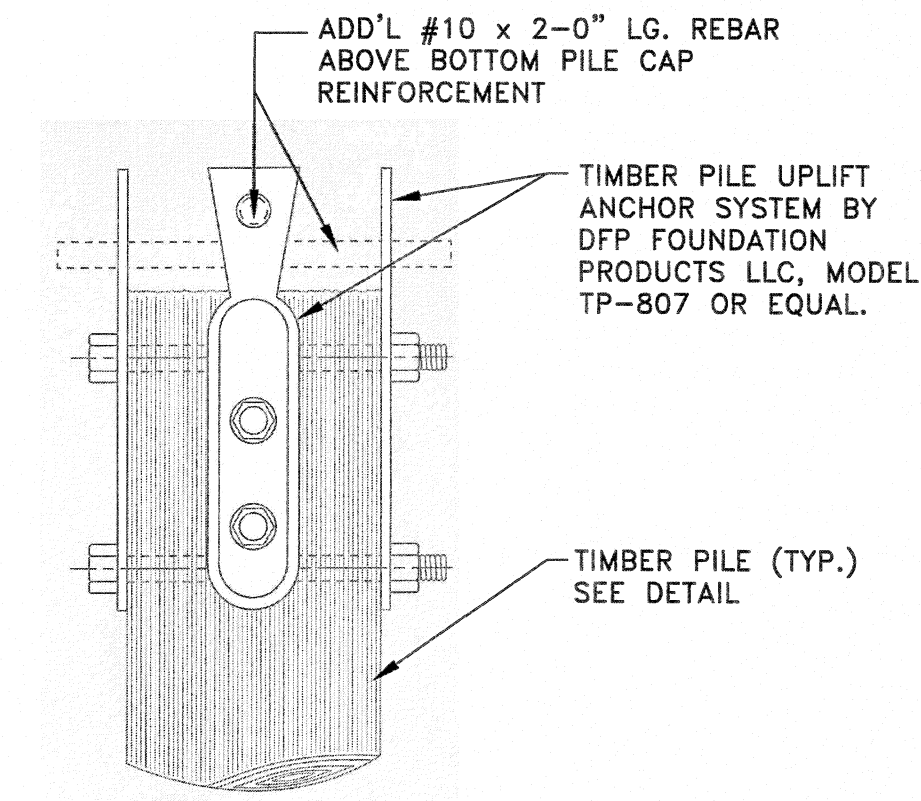
SCALE: 3/4" = 1'-0"



TYPICAL PILE CAP/FOOTING (F2) PLAN

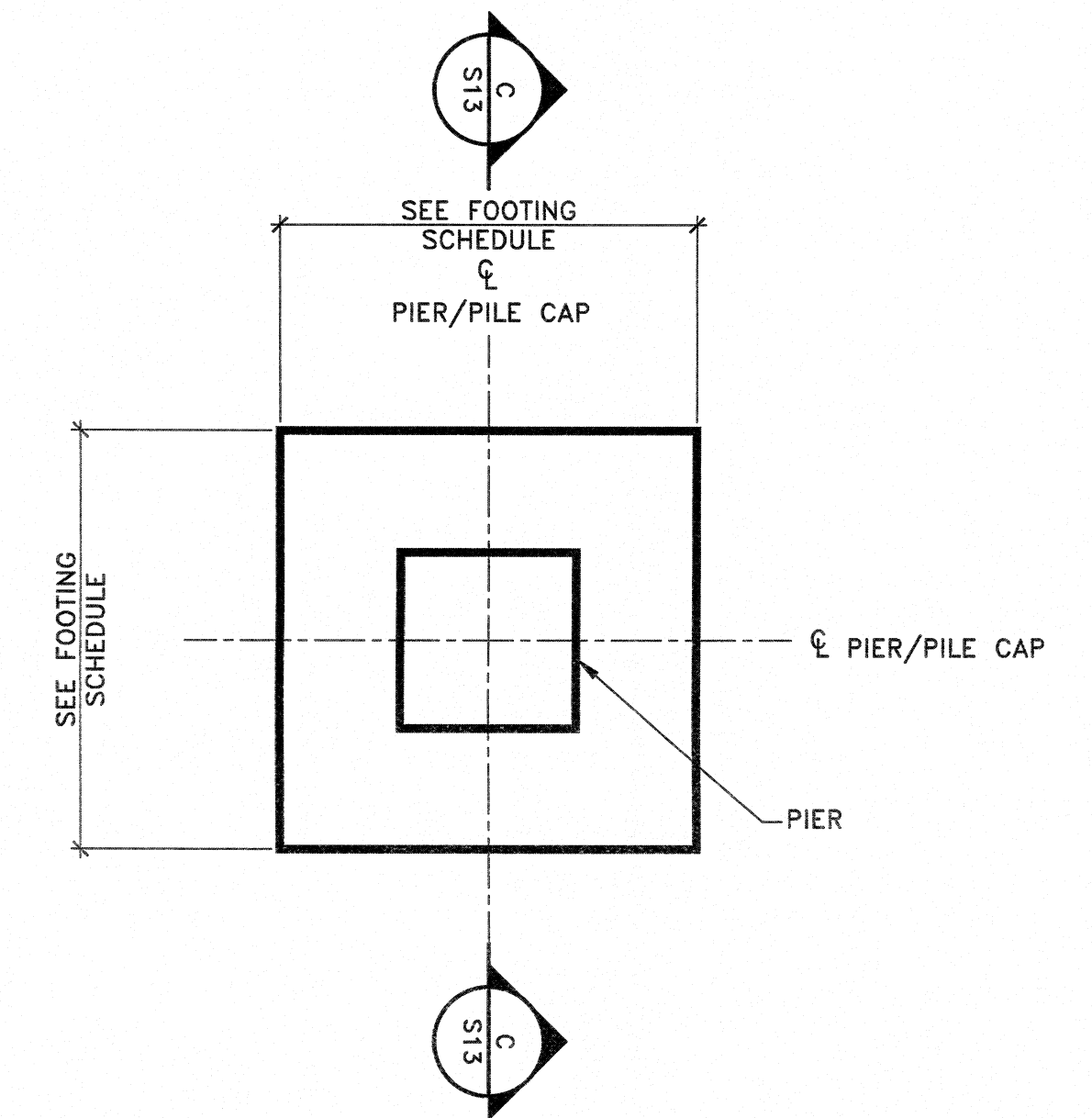
SCALE: 3/4" = 1'-0"

NOTE: ALL PIPES IN CAP/FOOTING (F2) SHALL CONTAIN DFP TP-807 TIMBER PILE UPLIFT ANCHORS OR EQUAL. SEE DETAIL 1 ON SHEET S13.



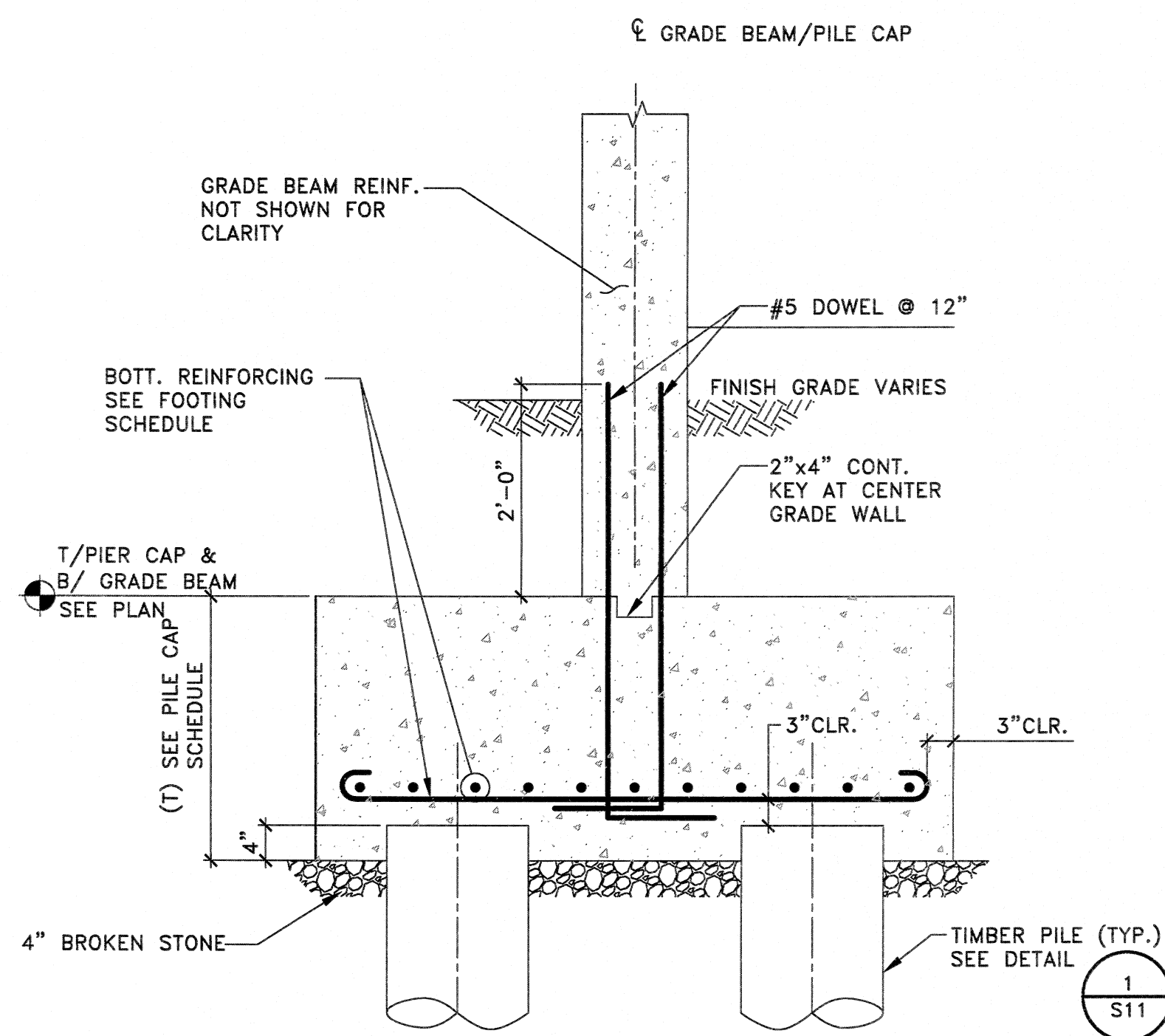
DETAIL 1

SCALE: N.T.S.



TYPICAL FOOTING (F3/F4) PLAN

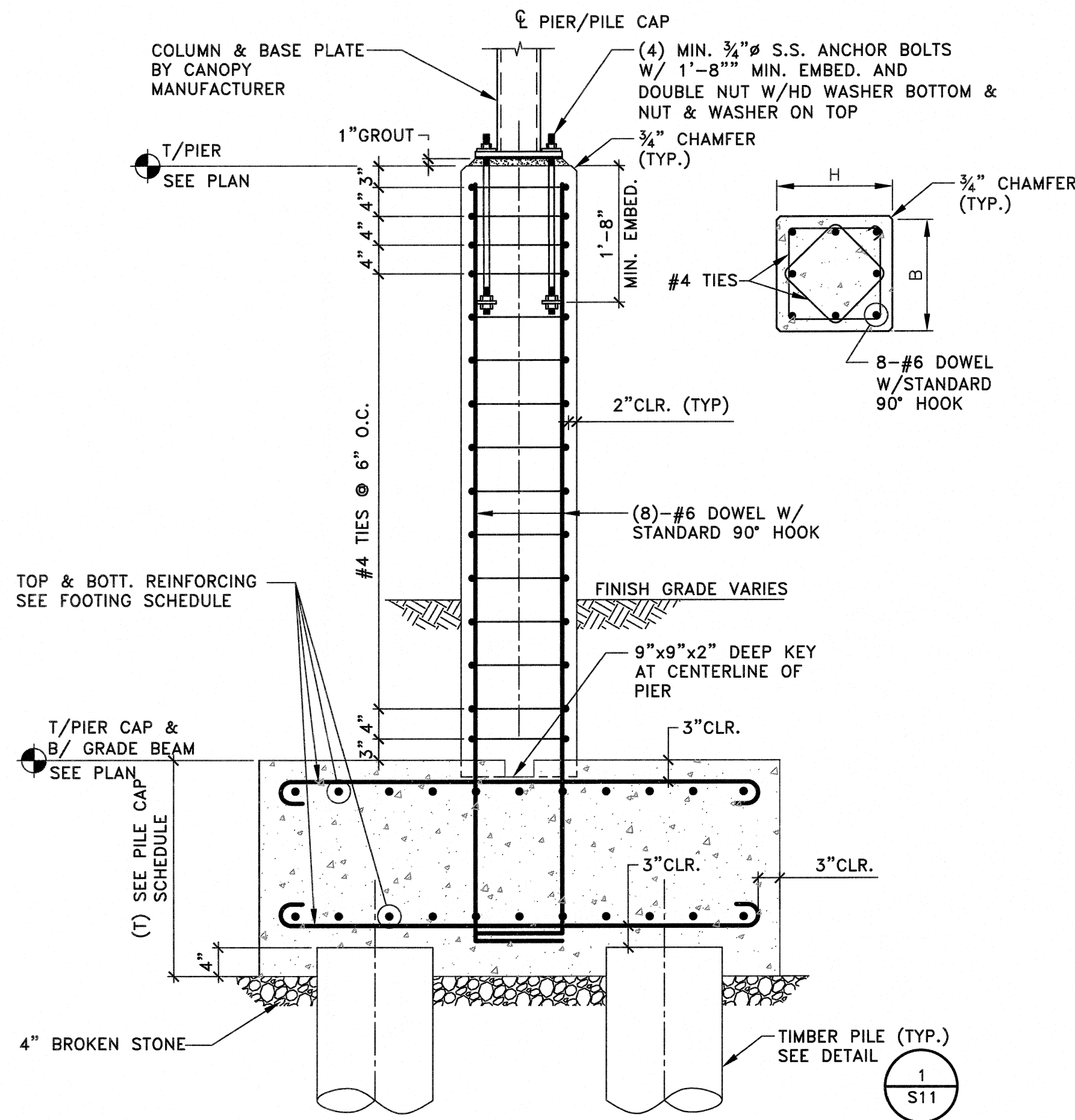
SCALE: 3/4" = 1'-0"



SECTION A TYPICAL PILE CAP/FOOTING (F1) SECTION

SCALE: 3/4" = 1'-0"

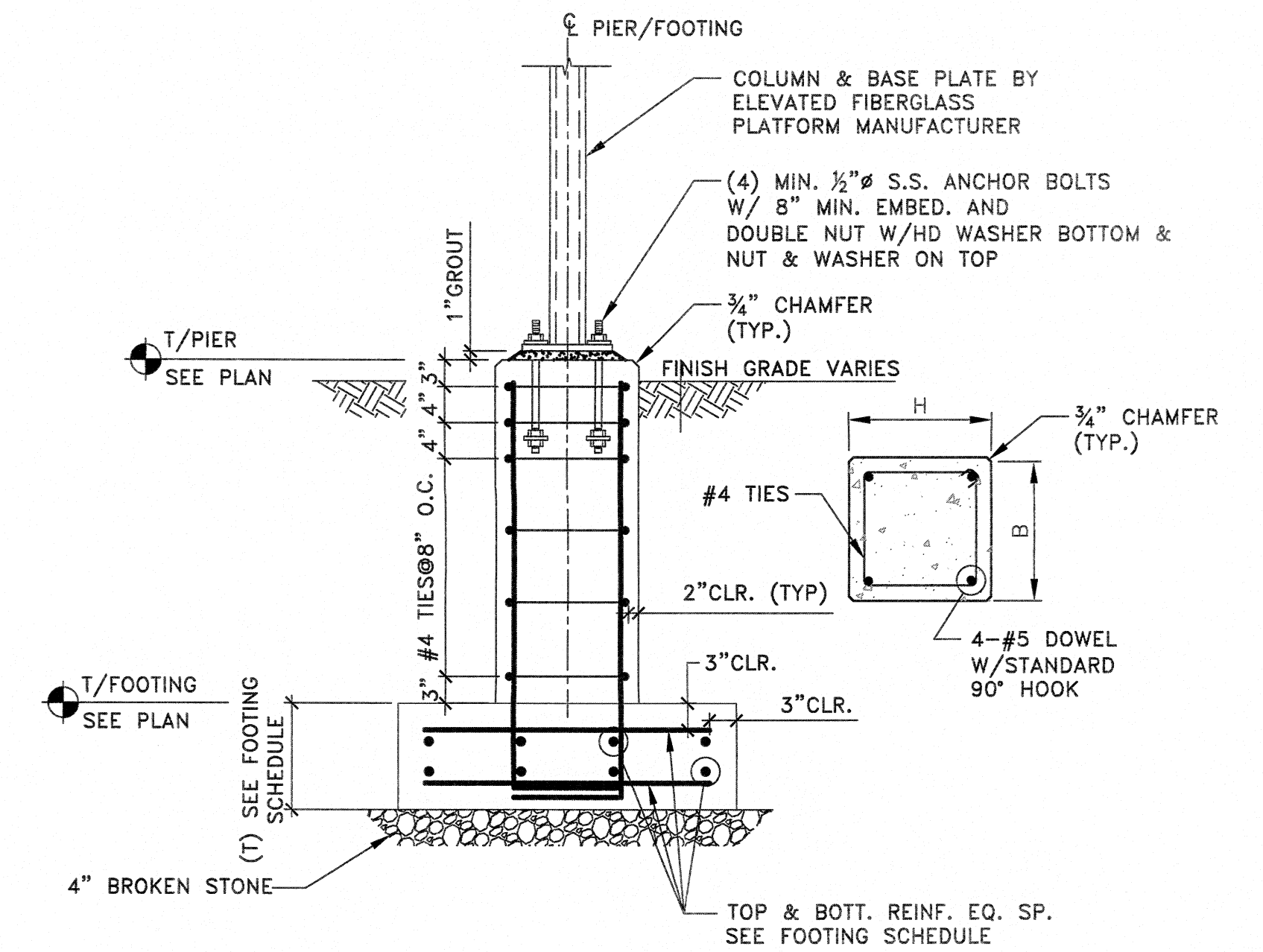
- NOTES:
- FOR TYPICAL CONCRETE DETAILS AND NOTES, SEE SHEET S01.
 - ALL CONCRETE SHALL BE CLASS E CONCRETE AND SHALL CONTAIN FIBERMESH 150 @ 1.5 lb/CY BY PROPEX CONCRETE SYSTEMS.



SECTION B TYPICAL PILE CAP/FOOTING (F2) SECTION

SCALE: 3/4" = 1'-0"

- NOTES:
- ANCHOR BOLTS LAYOUT SHALL BE COORDINATED WITH APPROVED CANOPY SHOP DRAWINGS.
 - ALL PIPES IN CAP/FOOTING (F2) SHALL CONTAIN DFP TP-807 TIMBER PILE UPLIFT ANCHORS OR EQUAL. SEE DETAIL 1 ON SHEET S13.



SECTION C TYPICAL FOOTING (F3/F4) SECTION

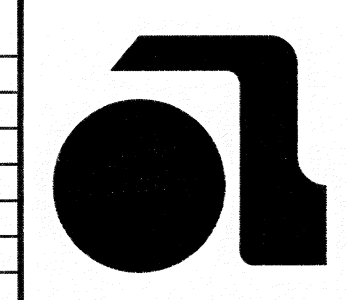
SCALE: 3/4" = 1'-0"

NOTE: ANCHOR BOLTS LAYOUT SHALL BE COORDINATED WITH APPROVED ELEVATED FIBERGLASS PLATFORM SHOP DRAWINGS.

Path: 4/10/2017 3:27 PM. Last saved: 12/30/2016 1:02 PM. File Name: K:\Projects\8072602300A\Drawings\Exp-S13_Grl_Corridor_Building_Sections_&_Details.dwg

APPROVED: *Richard A. Alaimo*
Richard A. Alaimo
 PROFESSIONAL ENGINEER
 NEW JERSEY LICENSE NO. 13195

REVISIONS	DATE	BY



RICHARD A. ALAIMO ENGINEERING COMPANY
 Consulting Engineers
 NJCA 24GA27988800
 200 HIGH STREET MOUNT HOLLY, N.J.
 2 MARKET STREET PATERSON, N.J.

GRIT CHAMBER UPGRADE
GRIT CLASSIFIER BUILDING SECTIONS AND DETAILS
 SCALE: AS NOTED

CLIENT: **WOODBRIIDGE TOWNSHIP**
 PROJECT LOCATION: **WOODBRIIDGE TOWNSHIP MIDDLESEX COUNTY NEW JERSEY**
 PROJECT NO.: **B-0726-0023-000**
 CONTRACT NO.: **1230**

DATE: **APRIL 2017**
 DESIGNED BY: **PG**
 DRAWN BY: **PG**
 CHECKED BY: **PG**
 DEPT. HEAD:
 SHEET: **S13**
 FILE NO.: