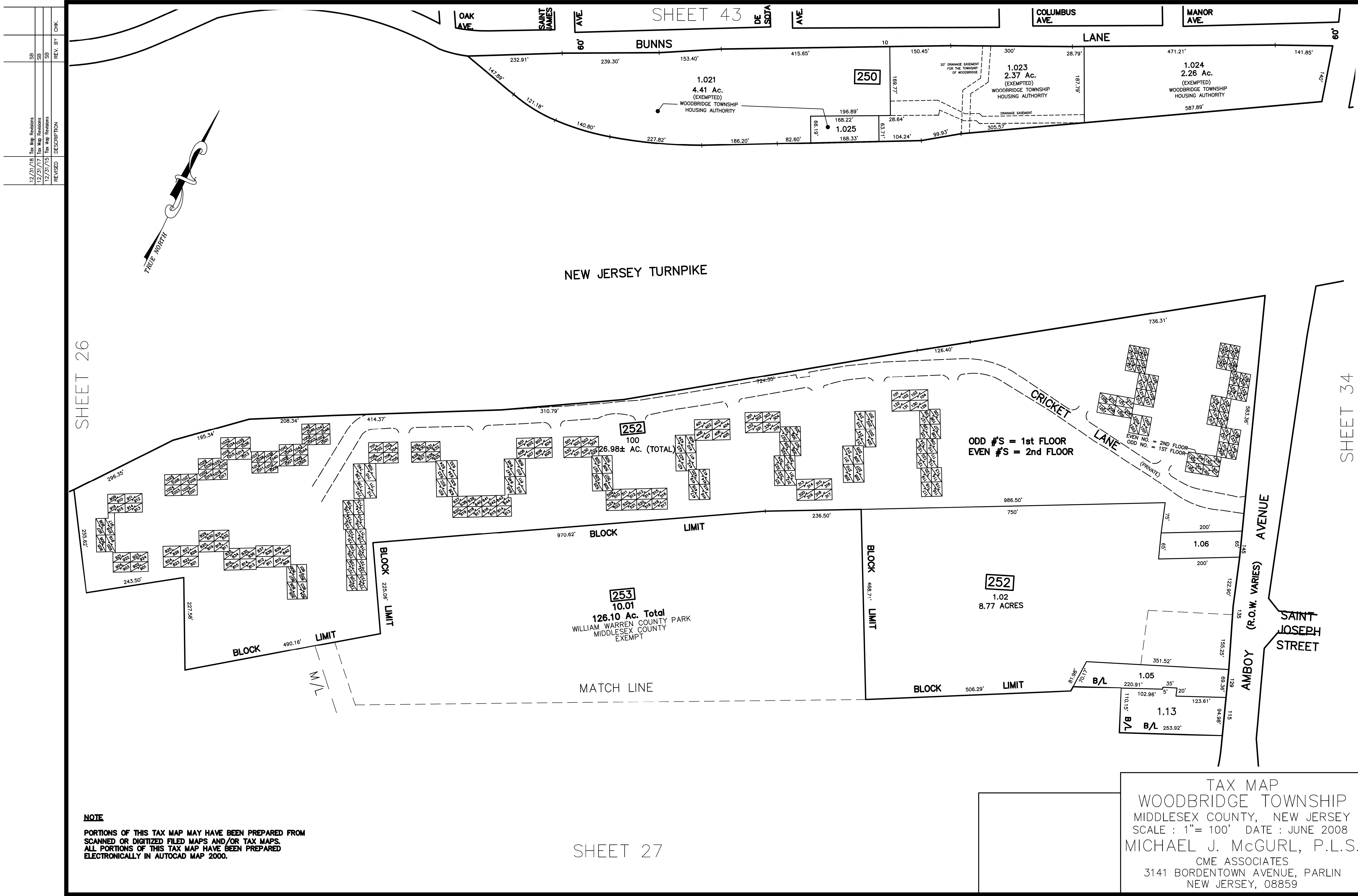
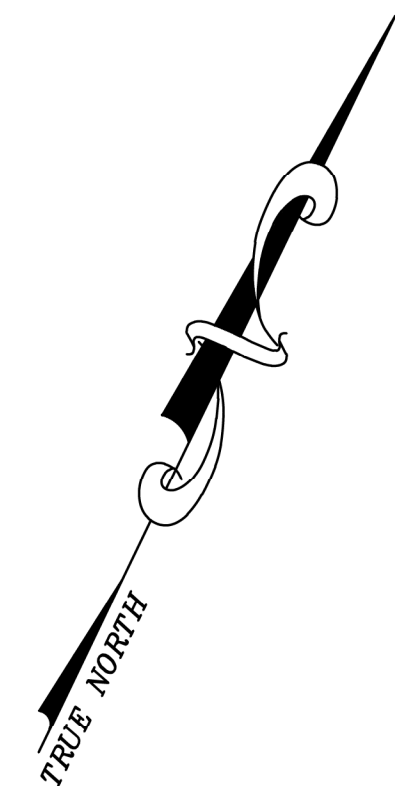


|          |                      |    |         |      |
|----------|----------------------|----|---------|------|
| 12/31/18 | Tax Map Revisions    | SR | REV. BY | CHK. |
| 12/31/17 | Tax Map Revisions    | SR |         |      |
| 12/31/15 | Tax Map Revisions    | SR |         |      |
|          | REVISION DESCRIPTION |    |         |      |



SHEET 26

SHEET 34

**NOTE**

PORTIONS OF THIS TAX MAP MAY HAVE BEEN PREPARED FROM  
 SCANNED OR DIGITIZED FILED MAPS AND/OR TAX MAPS.  
 ALL PORTIONS OF THIS TAX MAP HAVE BEEN PREPARED  
 ELECTRONICALLY IN AUTOCAD MAP 2000.

SHEET 27

TAX MAP  
 WOODBRIDGE TOWNSHIP  
 MIDDLESEX COUNTY, NEW JERSEY  
 SCALE : 1" = 100' DATE : JUNE 2008  
 MICHAEL J. McGURL, P.L.S.  
 CME ASSOCIATES  
 3141 BORDENTOWN AVENUE, PARLIN  
 NEW JERSEY, 08859