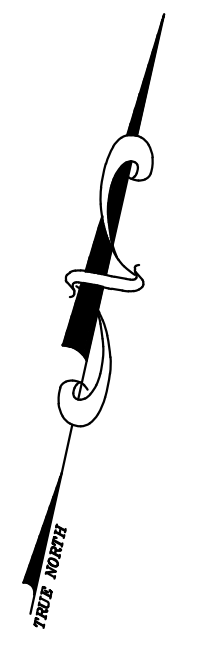
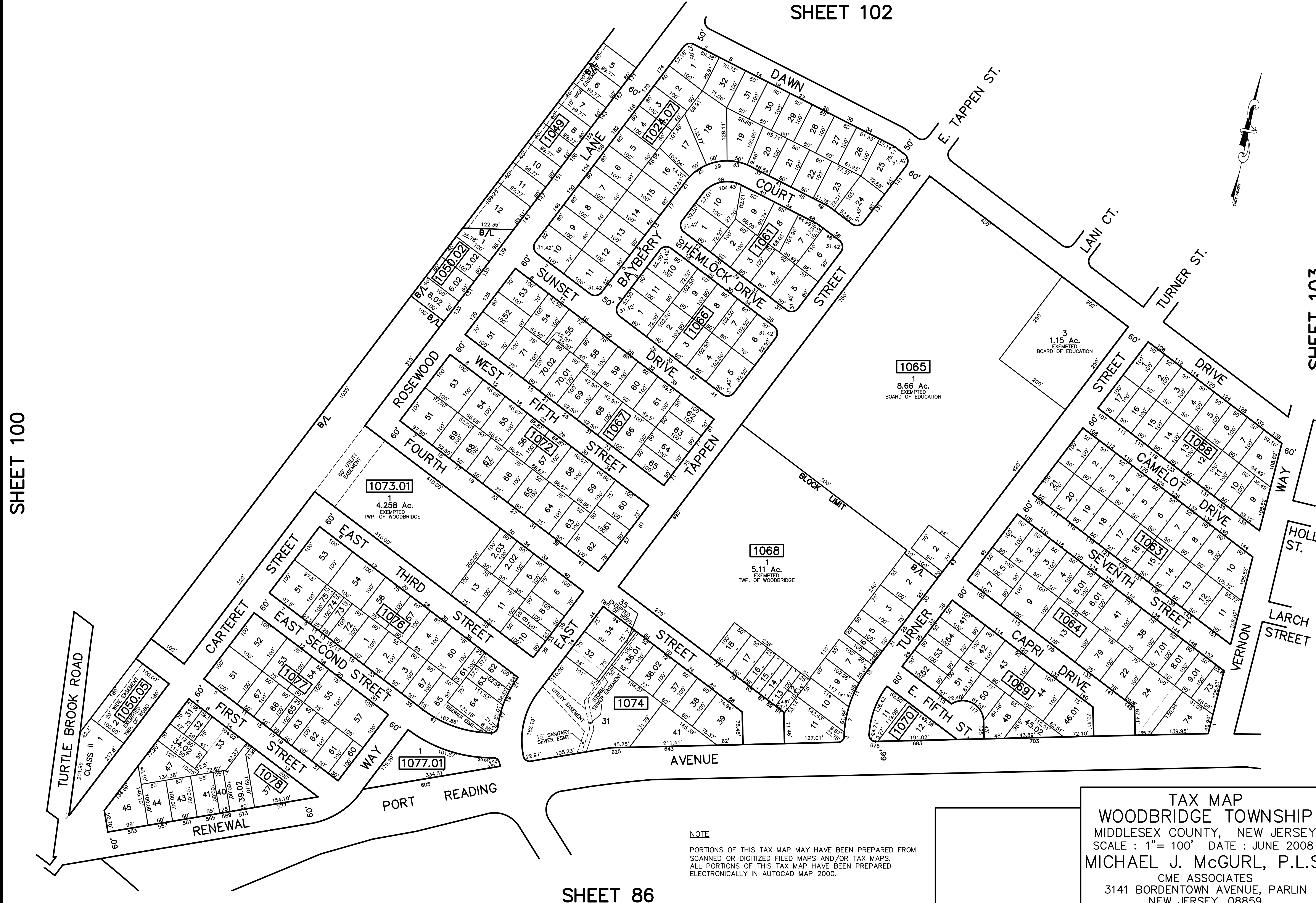


12/31/16	Tox Map Revisions	SR
12/31/15	Tox Map Revisions	SR
12/31/12	Tox Map Revisions	SR
11/02/11	BL 1073.01 L 2&4-Combine to create L 2.01	SR
REVISED	DESCRIPTION	
	REV. BY	CHK.



1065
 1
 8.66 Ac.
 EXEMPTED
 BOARD OF EDUCATION

1073.01
 1
 4.258 Ac.
 EXEMPTED
 TWP. OF WOODBRIDGE

1068
 1
 5.11 Ac.
 EXEMPTED
 TWP. OF WOODBRIDGE

1074

1077.01

NOTE
 PORTIONS OF THIS TAX MAP MAY HAVE BEEN PREPARED FROM
 SCANNED OR DIGITIZED FILED MAPS AND/OR TAX MAPS.
 ALL PORTIONS OF THIS TAX MAP HAVE BEEN PREPARED
 ELECTRONICALLY IN AUTOCAD MAP 2000.

TAX MAP
WOODBIDGE TOWNSHIP
 MIDDLESEX COUNTY, NEW JERSEY
 SCALE : 1"= 100' DATE : JUNE 2008
MICHAEL J. McGURL, P.L.S.
 CME ASSOCIATES
 3141 BORDENTOWN AVENUE, PARLIN
 NEW JERSEY, 08859