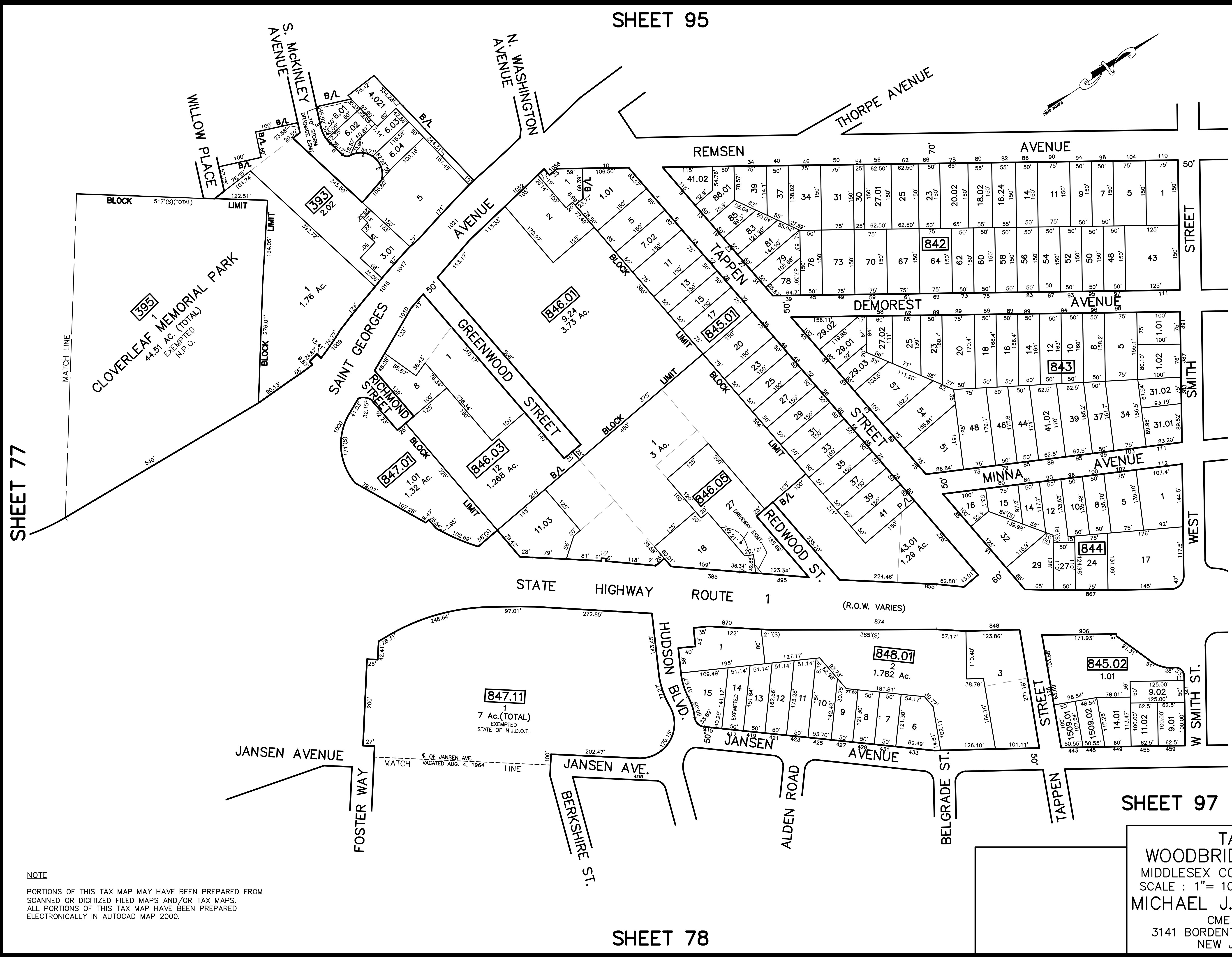
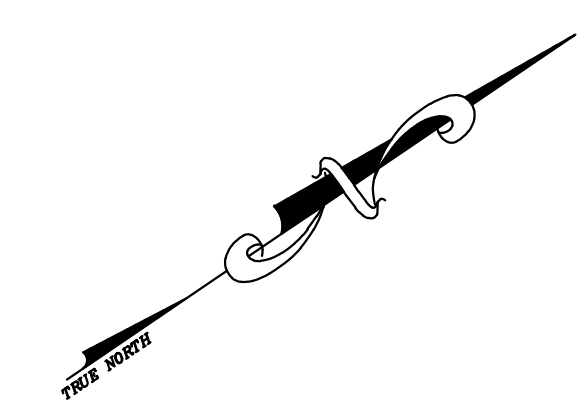


SHEET 95

12/31/16	Tox Map Revisions	SR
12/31/15	Tox Map Revisions	SR
12/31/13	Tox Map Revisions	SR
12/31/12	Tox Map Revisions	SR
10/24/10	ADDITION TO BK. 847.01, Lct. 1	JSE
REVISED	DESCRIPTION	REV. BY
		CHK.



SHEET 77

SHEET 110

NOTE
 PORTIONS OF THIS TAX MAP MAY HAVE BEEN PREPARED FROM
 SCANNED OR DIGITIZED FILED MAPS AND/OR TAX MAPS.
 ALL PORTIONS OF THIS TAX MAP HAVE BEEN PREPARED
 ELECTRONICALLY IN AUTOCAD MAP 2000.

SHEET 78

SHEET 97

TAX MAP
WOODBIDGE TOWNSHIP
 MIDDLESEX COUNTY, NEW JERSEY
 SCALE : 1" = 100' DATE : JUNE 2008
MICHAEL J. McGURL, P.L.S.
 CME ASSOCIATES
 3141 BORDENTOWN AVENUE, PARLIN
 NEW JERSEY, 08859