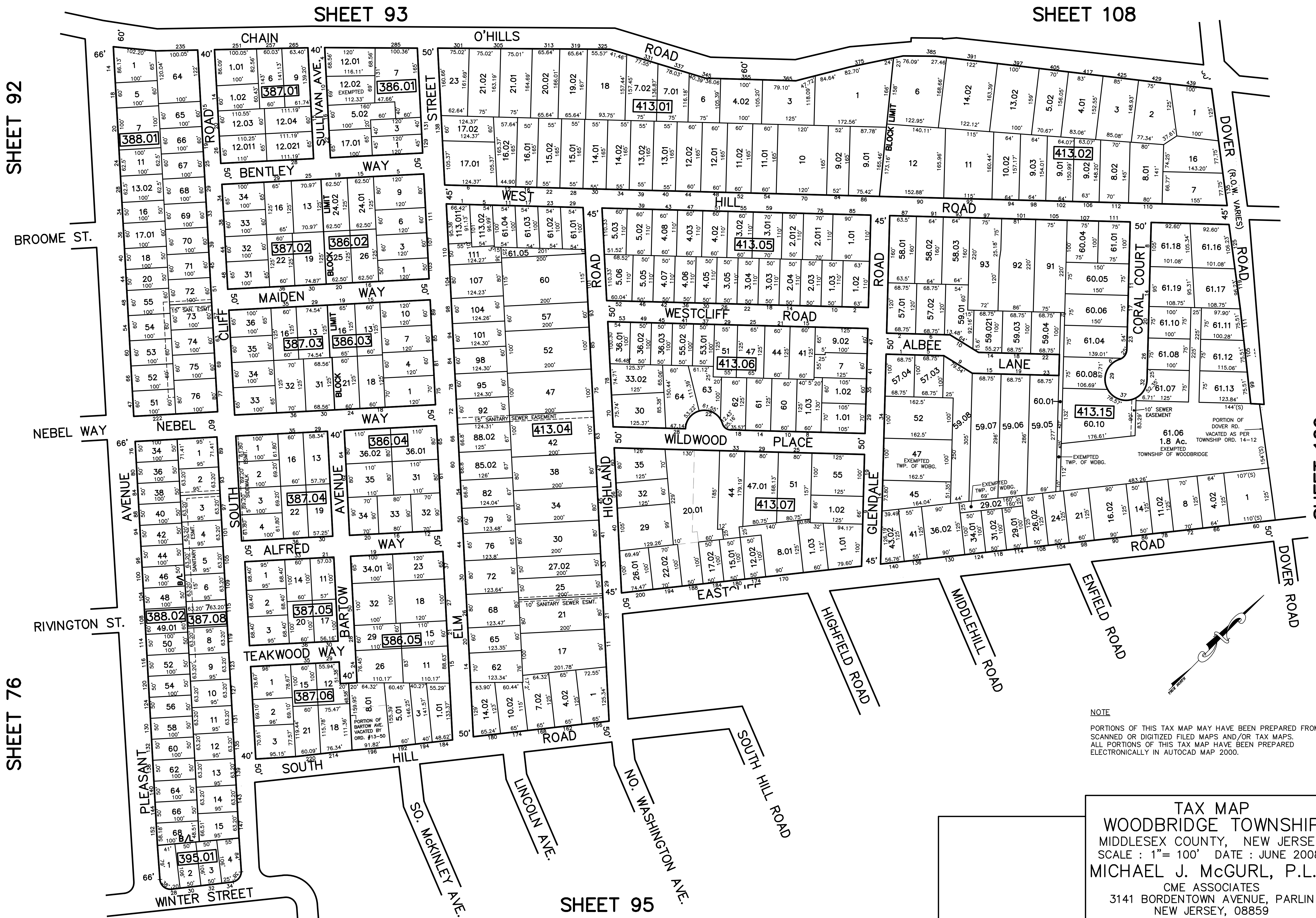


12/31/17	Top Map Revisions	SR
12/31/15	Top Map Revisions	SR
12/31/14	Top Map Revisions	SR
12/31/12	Top Map Revisions	SR
REVISED	DESCRIPTION	
REV. BY	CHK.	



SHEET 92

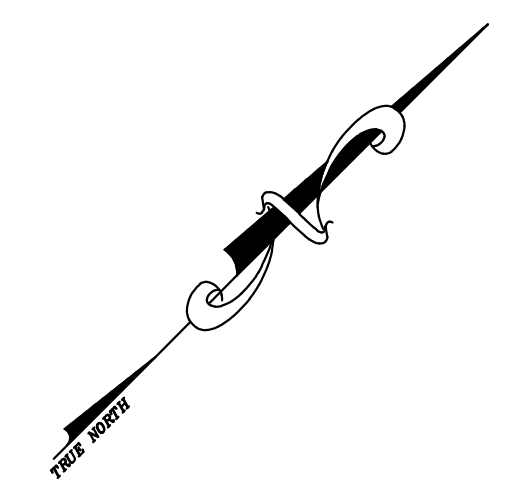
SHEET 93

SHEET 108

SHEET 76

SHEET 95

SHEET 109



NOTE
 PORTIONS OF THIS TAX MAP MAY HAVE BEEN PREPARED FROM
 SCANNED OR DIGITIZED FILED MAPS AND/OR TAX MAPS.
 ALL PORTIONS OF THIS TAX MAP HAVE BEEN PREPARED
 ELECTRONICALLY IN AUTOCAD MAP 2000.

TAX MAP
WOODBIDGE TOWNSHIP
 MIDDLESEX COUNTY, NEW JERSEY
 SCALE : 1" = 100' DATE : JUNE 2008
MICHAEL J. McGURL, P.L.S.
 CME ASSOCIATES
 3141 BORDENTOWN AVENUE, PARLIN
 NEW JERSEY, 08859