

12/31/14	Tax Map Revisions	SB
12/31/13	Tax Map Revisions	SB
12/31/12	Tax Map Revisions	SB
09/02/10	Subdivision-Bk 403.03, lot 10 & 23	JSE
REVISED	DESCRIPTION	REV. BY
		CHK.

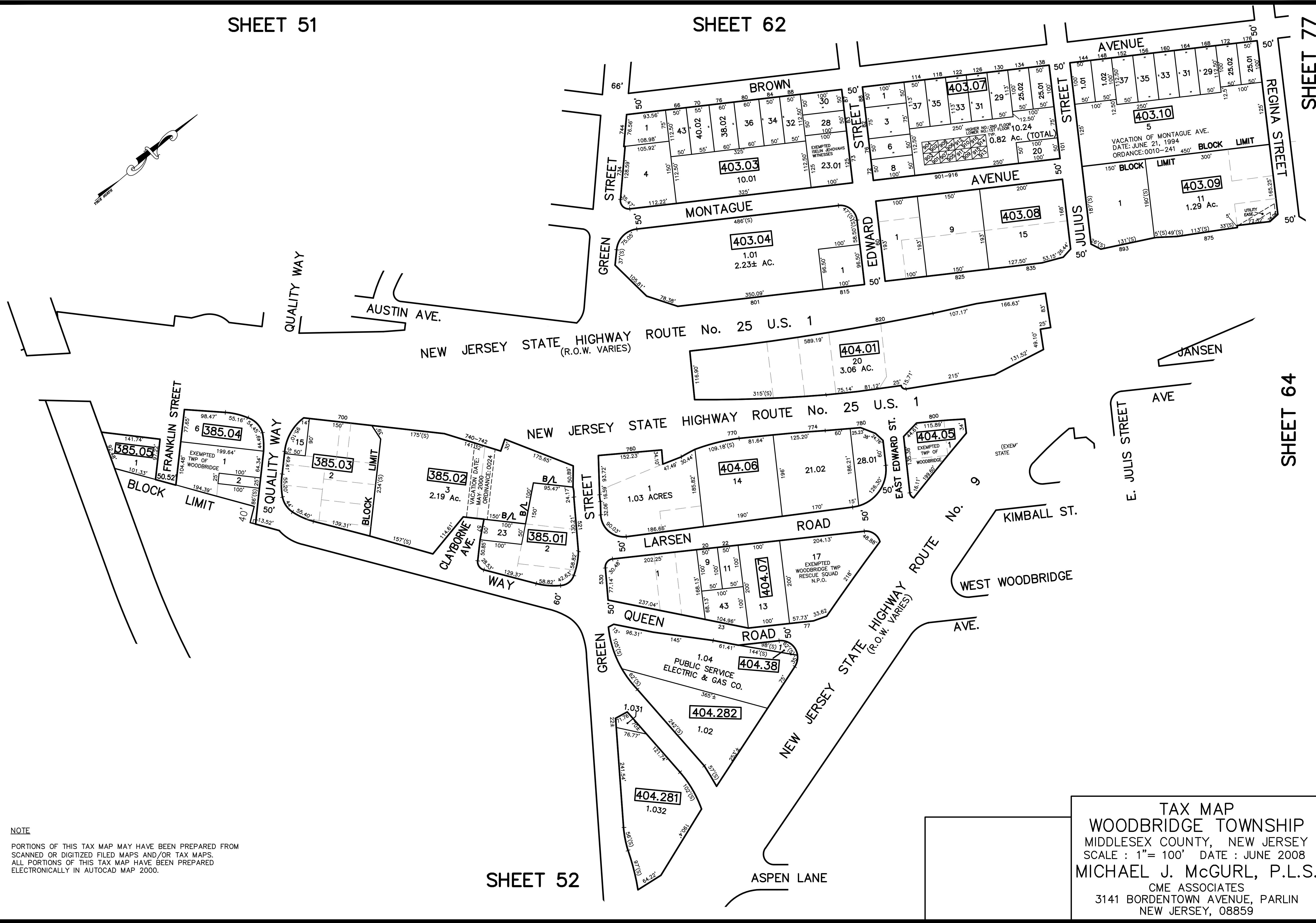
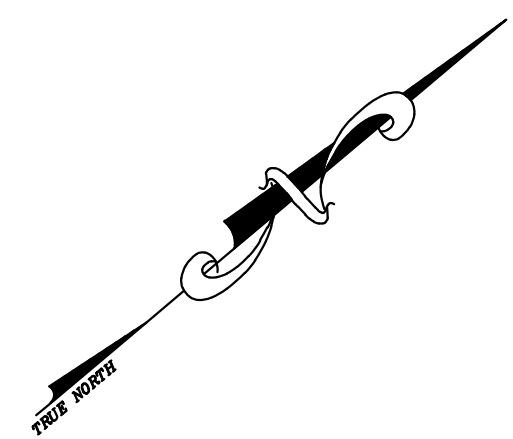
SHEET 51

SHEET 62

SHEET 77

SHEET 64

SHEET 52



NOTE  
 PORTIONS OF THIS TAX MAP MAY HAVE BEEN PREPARED FROM  
 SCANNED OR DIGITIZED FILED MAPS AND/OR TAX MAPS.  
 ALL PORTIONS OF THIS TAX MAP HAVE BEEN PREPARED  
 ELECTRONICALLY IN AUTOCAD MAP 2000.

TAX MAP  
 WOODBRIDGE TOWNSHIP  
 MIDDLESEX COUNTY, NEW JERSEY  
 SCALE : 1"= 100' DATE : JUNE 2008  
 MICHAEL J. McGURL, P.L.S.  
 CME ASSOCIATES  
 3141 BORDENTOWN AVENUE, PARLIN  
 NEW JERSEY, 08859