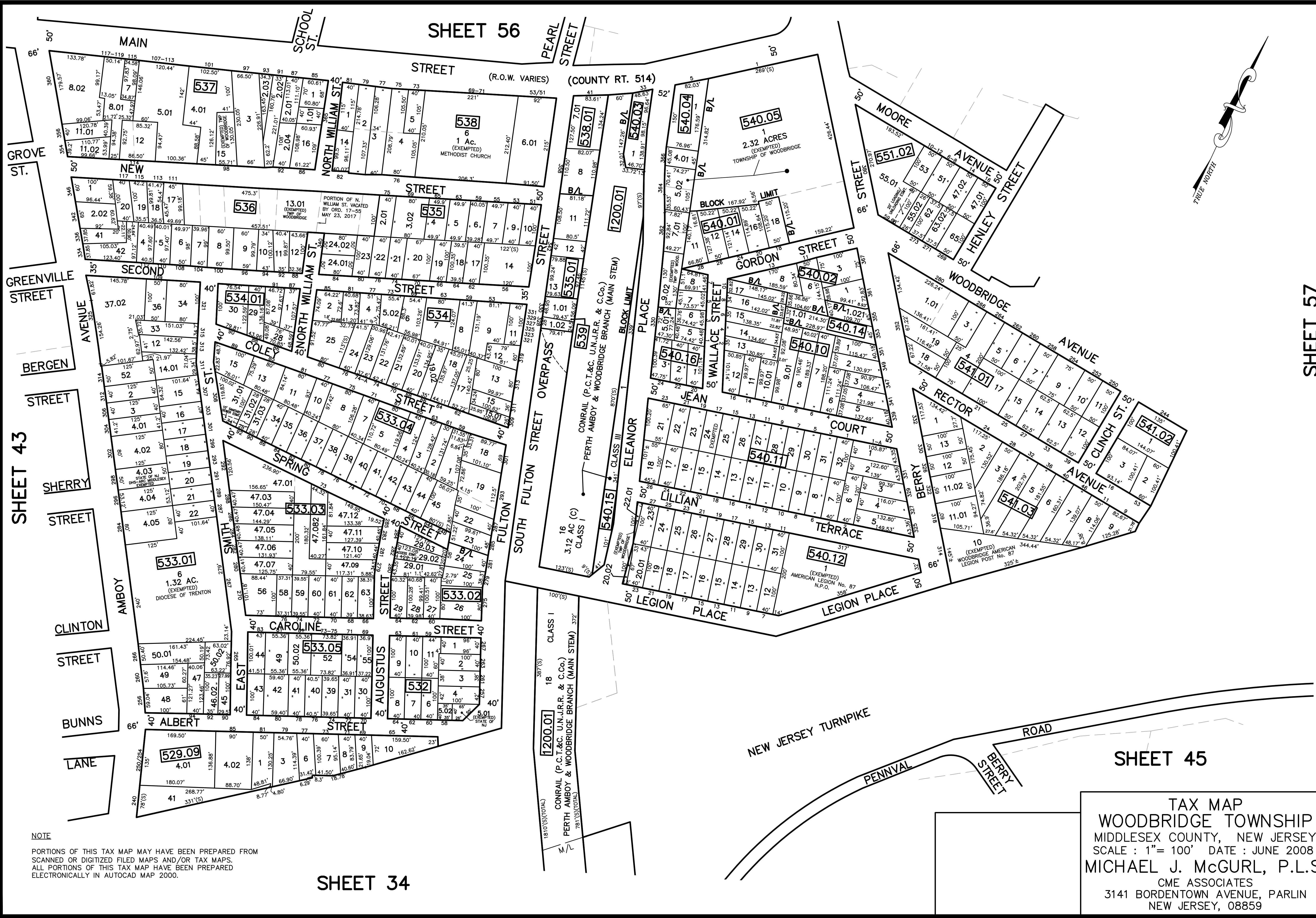


12/23/19	Tox Map Revisions	SB
12/23/16	Tox Map Revisions	SB
12/23/14	Tox Map Revisions	SB
12/23/13	Tox Map Revisions	SB
12/23/12	Tox Map Revisions	SB
11/01/10	LAT consolidation-Bk 533.01	USE
09/03/10	Corrections-Bk 536, lot 41 and 42	USE
	REVISION DESCRIPTION	
	REV. BY	CHK.



SHEET 57

SHEET 43

NOTE
 PORTIONS OF THIS TAX MAP MAY HAVE BEEN PREPARED FROM
 SCANNED OR DIGITIZED FILED MAPS AND/OR TAX MAPS.
 ALL PORTIONS OF THIS TAX MAP HAVE BEEN PREPARED
 ELECTRONICALLY IN AUTOCAD MAP 2000.

SHEET 34

TAX MAP
 WOODBRIDGE TOWNSHIP
 MIDDLESEX COUNTY, NEW JERSEY
 SCALE : 1"= 100' DATE : JUNE 2008
 MICHAEL J. McGURL, P.L.S.
 CME ASSOCIATES
 3141 BORDENTOWN AVENUE, PARLIN
 NEW JERSEY, 08859