

12/31/13	Tax Map Revisions	SB
12/31/12	Tax Map Revisions	SB
10/13/10	Various Easements-Bk 182.03, lot 1.01, 2	JSE
10/12/10	Easement, Vocobos-Bk 182.03, lot 1.01, 2	JSE
REVISED	DESCRIPTION	REV. BY
		CHK.

SHEET 25

SHEET 32

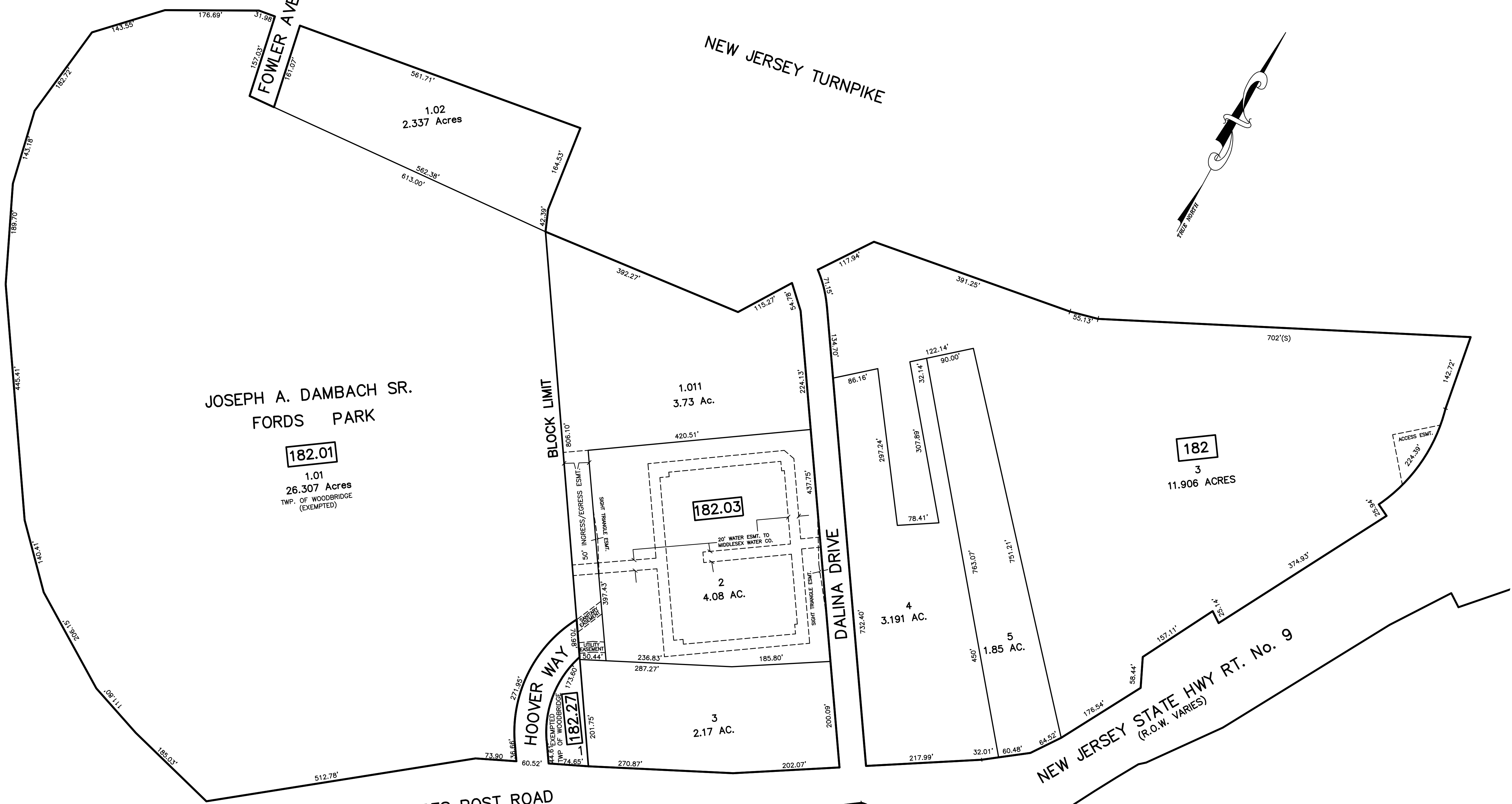
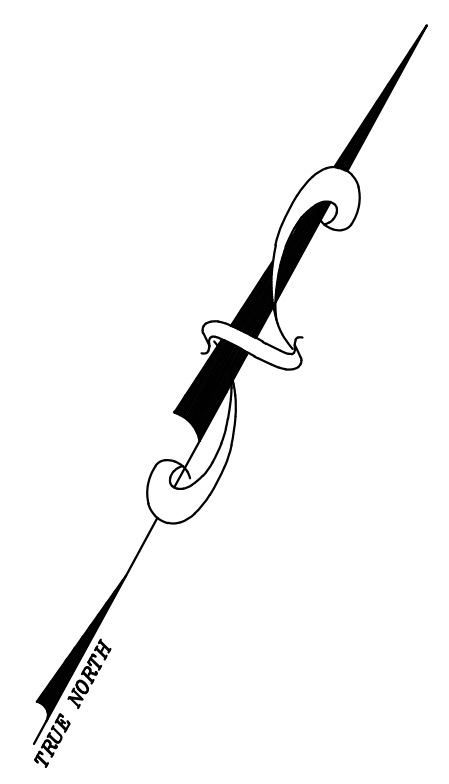
SHEET 20

SHEET 26

GARDEN STATE PARKWAY

JOSEPH A. DAMBACH SR.  
FORDS PARK

NEW JERSEY TURNPIKE



KING GEORGES POST ROAD

NEW JERSEY STATE HIGHWAY RT. No. 184

**NOTE**  
 PORTIONS OF THIS TAX MAP MAY HAVE BEEN PREPARED FROM  
 SCANNED OR DIGITIZED FILED MAPS AND/OR TAX MAPS.  
 ALL PORTIONS OF THIS TAX MAP HAVE BEEN PREPARED  
 ELECTRONICALLY IN AUTOCAD MAP 2000.

SHEET 16

SHEET 22

**TAX MAP**  
**WOODBIDGE TOWNSHIP**  
 MIDDLESEX COUNTY, NEW JERSEY  
 SCALE : 1"= 100' DATE : JUNE 2008  
**MICHAEL J. McGURL, P.L.S.**  
 CME ASSOCIATES  
 3141 BORDENTOWN AVENUE, PARLIN  
 NEW JERSEY, 08859