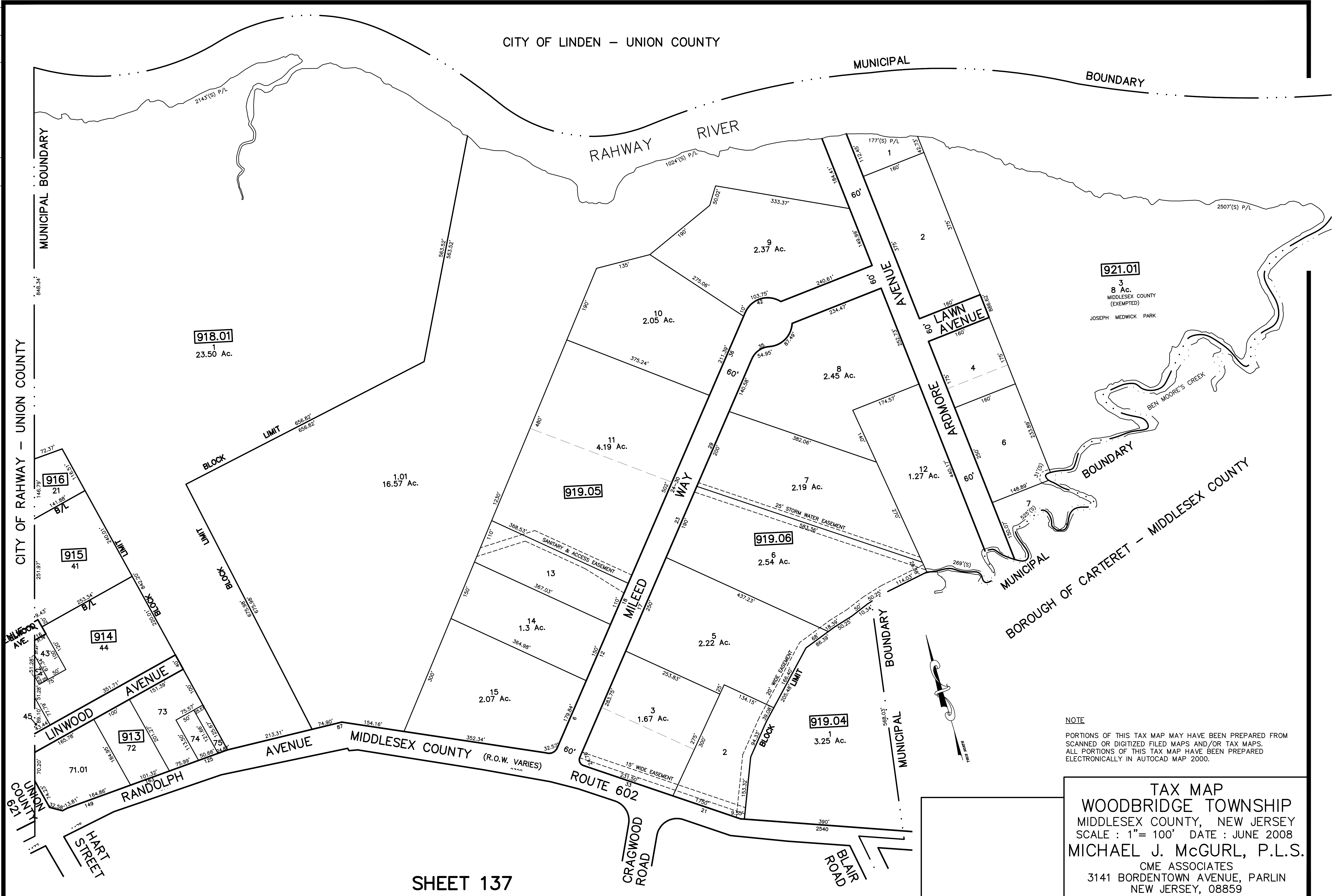


12/31/13	Tax Map Revisions	SB
12/31/12	Tax Map Revisions	SB
09/10/10	San./Access Emt.-Block 919.05, lot 13, 17	JSE
REVISED	DESCRIPTION	REV. BY
		CHK.



**NOTE**  
 PORTIONS OF THIS TAX MAP MAY HAVE BEEN PREPARED FROM  
 SCANNED OR DIGITIZED FILED MAPS AND/OR TAX MAPS.  
 ALL PORTIONS OF THIS TAX MAP HAVE BEEN PREPARED  
 ELECTRONICALLY IN AUTOCAD MAP 2000.

**TAX MAP**  
**WOODBIDGE TOWNSHIP**  
 MIDDLESEX COUNTY, NEW JERSEY  
 SCALE : 1" = 100' DATE : JUNE 2008  
**MICHAEL J. McGURL, P.L.S.**  
 CME ASSOCIATES  
 3141 BORDENTOWN AVENUE, PARLIN  
 NEW JERSEY, 08859