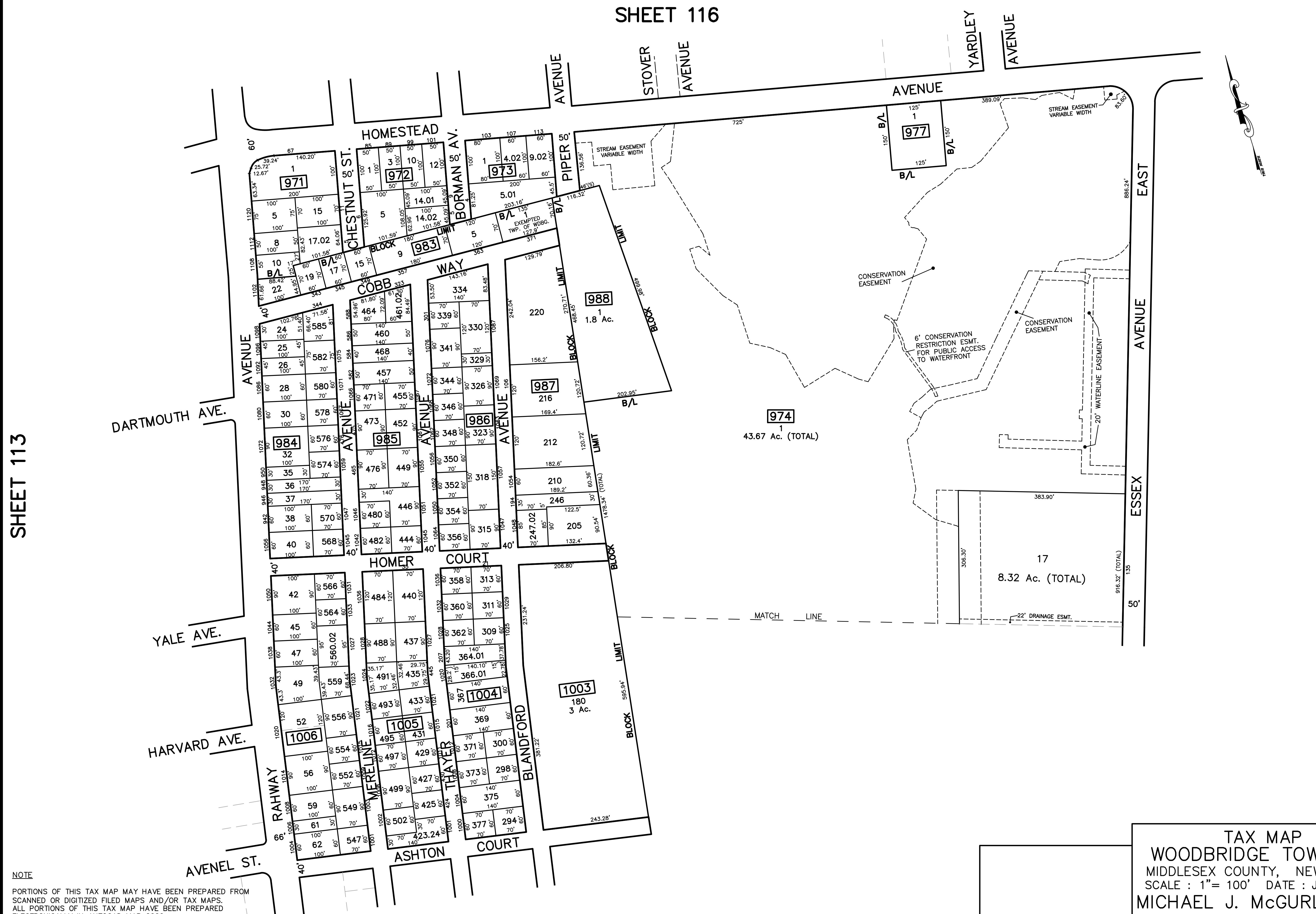


SHEET 116

12/31/13	Map Revisions	SB
12/31/12	Map Revisions	SB
02/11/11	Blk 974 Lot 1-Conservation Easements	JSE
REVISED	DESCRIPTION	REV. BY
		CHK.



NOTE  
 PORTIONS OF THIS TAX MAP MAY HAVE BEEN PREPARED FROM  
 SCANNED OR DIGITIZED FILED MAPS AND/OR TAX MAPS.  
 ALL PORTIONS OF THIS TAX MAP HAVE BEEN PREPARED  
 ELECTRONICALLY IN AUTOCAD MAP 2000.

TAX MAP  
 WOODBRIDGE TOWNSHIP  
 MIDDLESEX COUNTY, NEW JERSEY  
 SCALE : 1"= 100' DATE : JUNE 2008  
 MICHAEL J. McGURL, P.L.S.  
 CME ASSOCIATES  
 3141 BORDENTOWN AVENUE, PARLIN  
 NEW JERSEY, 08859

SHEET 113

SHEET 117